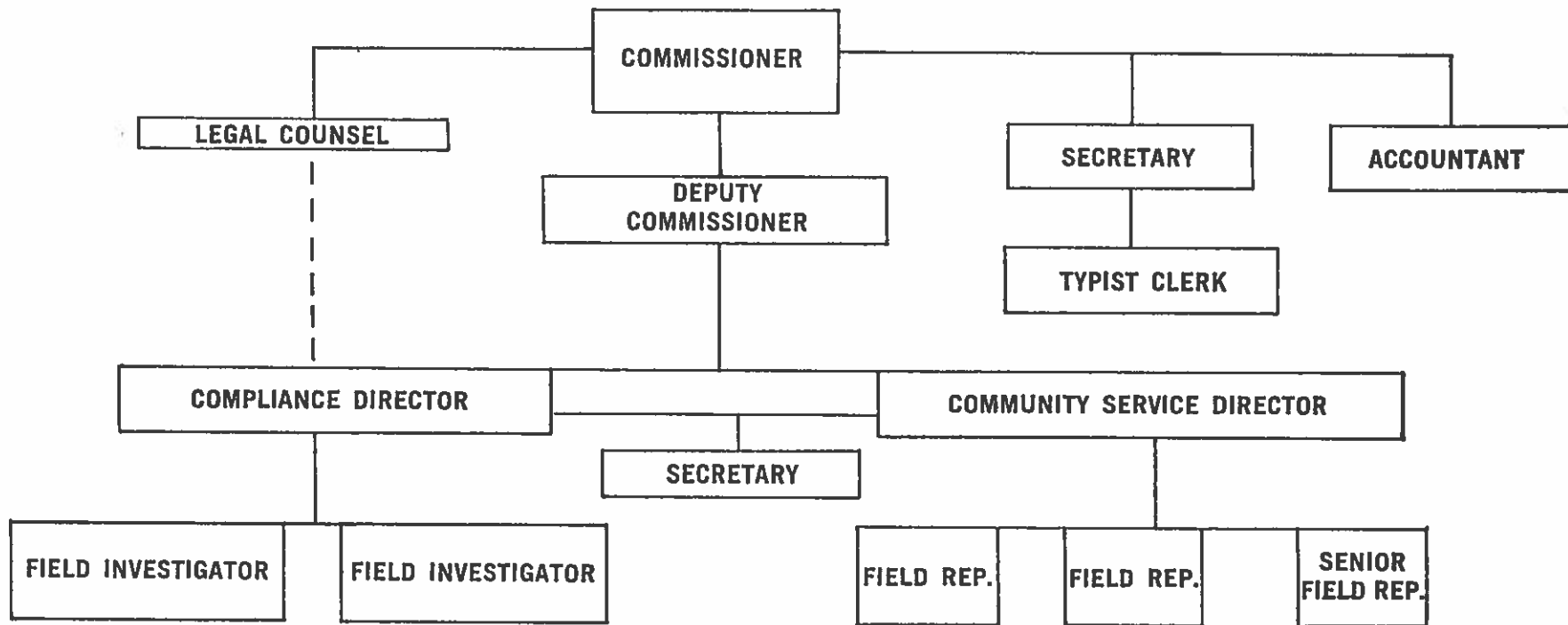
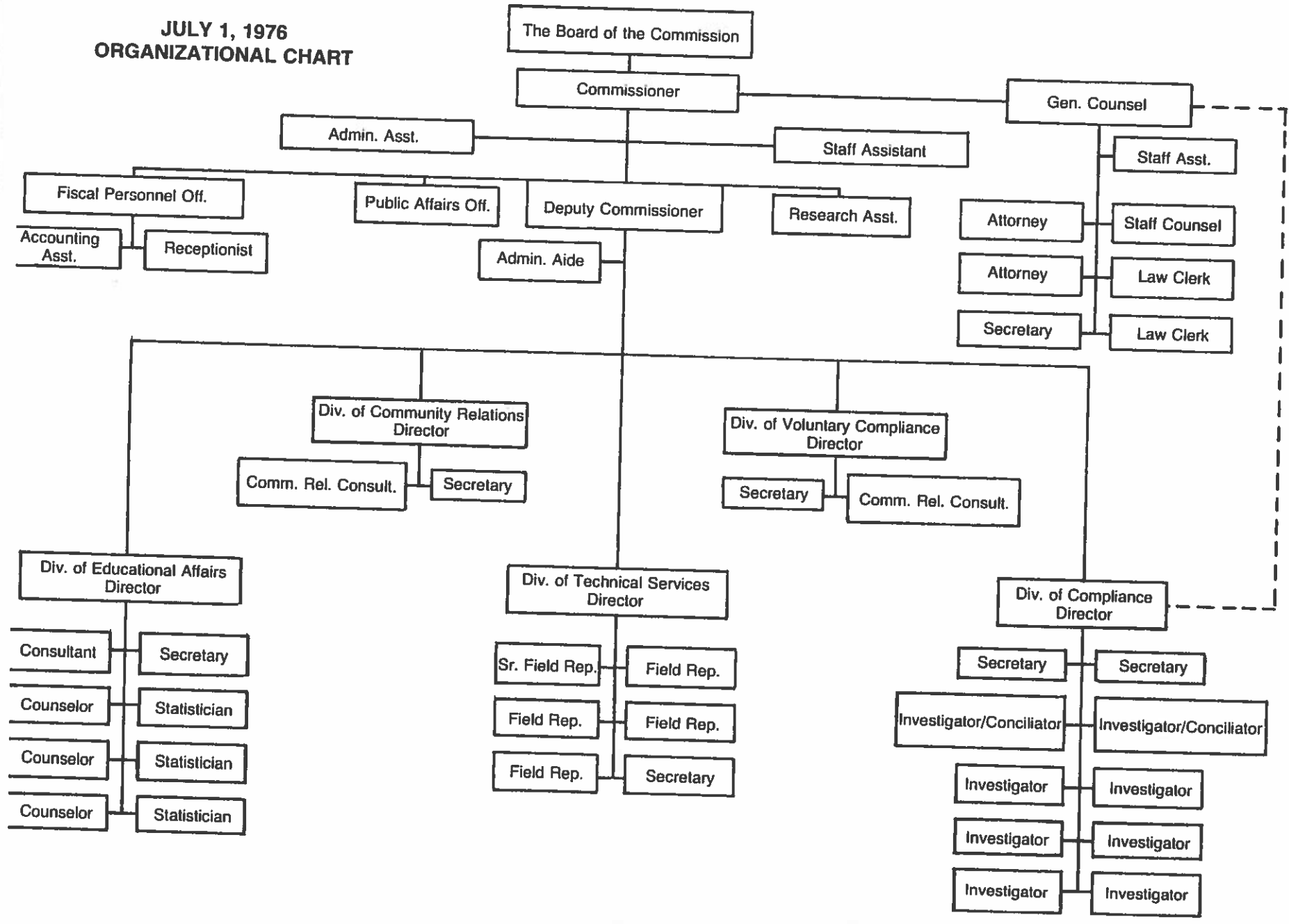
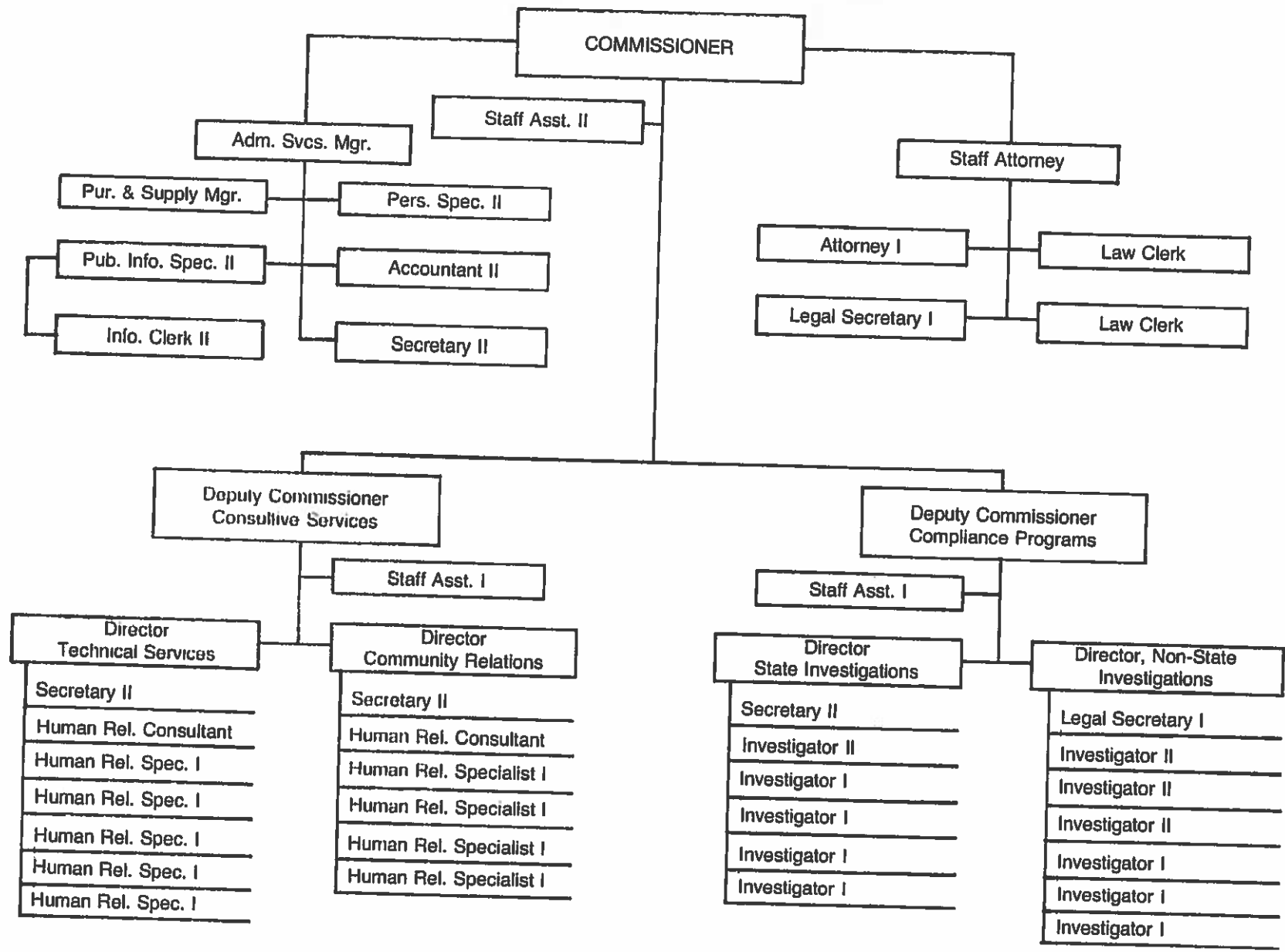


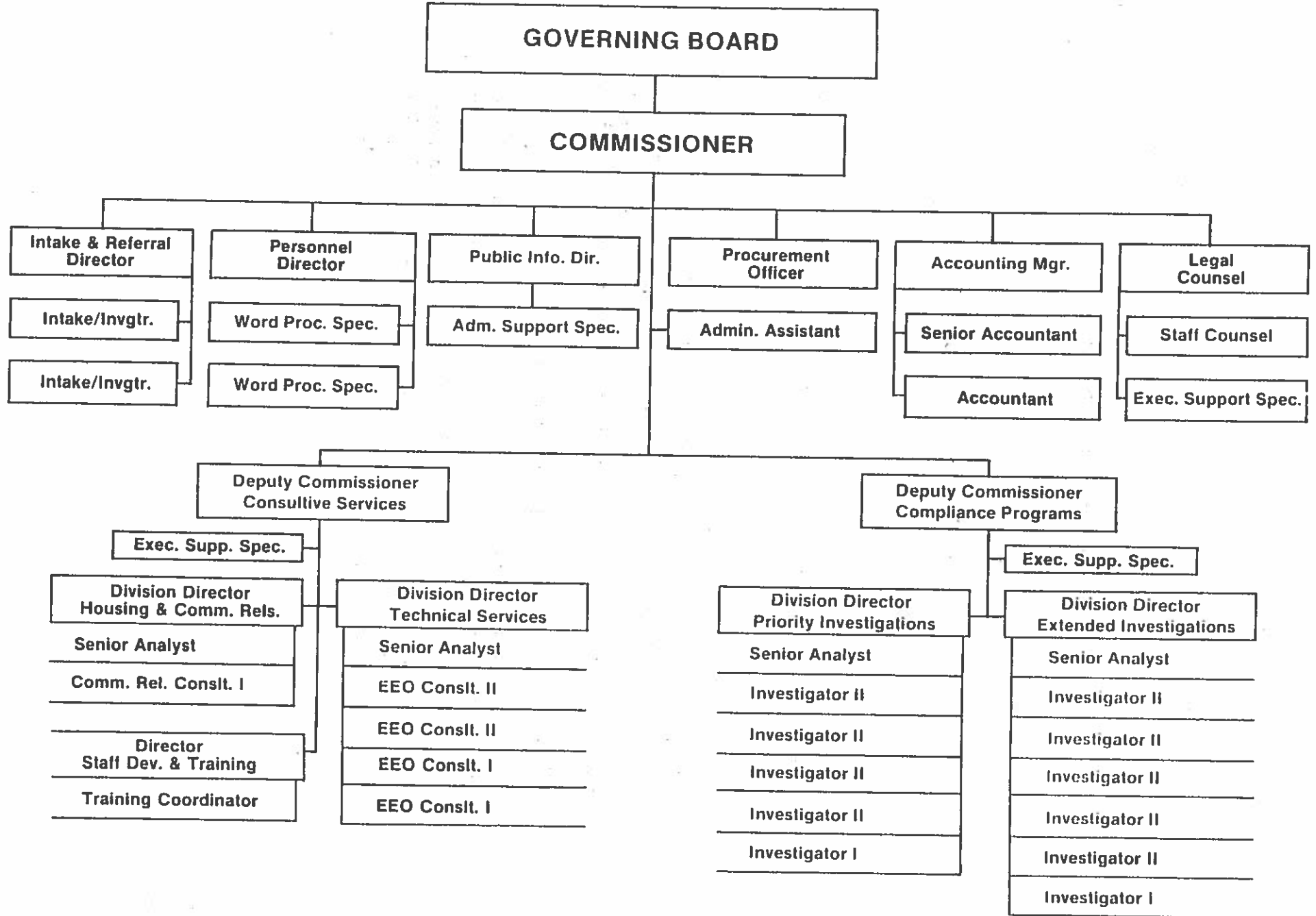
SOUTH CAROLINA COMMISSION ON HUMAN AFFAIRS ORGANIZATIONAL CHART



JULY 1, 1976
ORGANIZATIONAL CHART



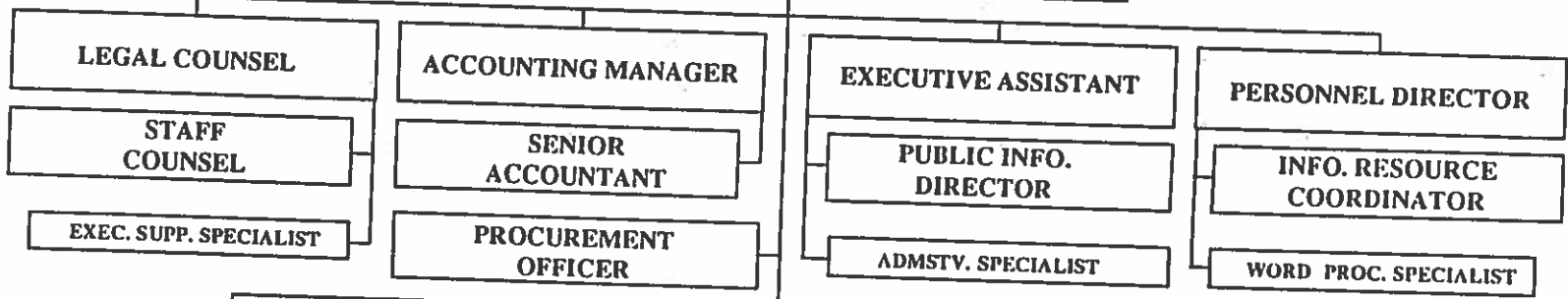




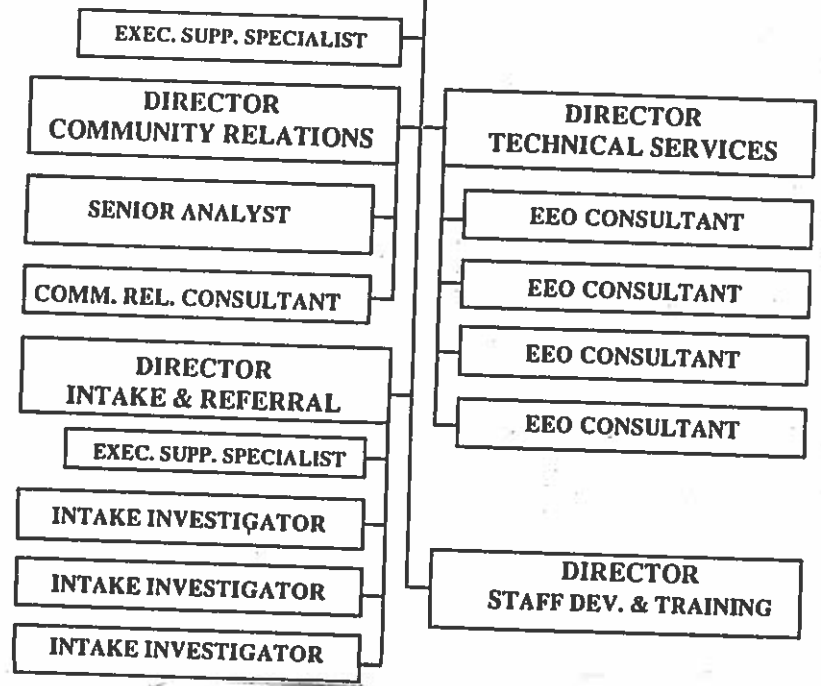
GOVERNING BOARD

COMMISSIONER

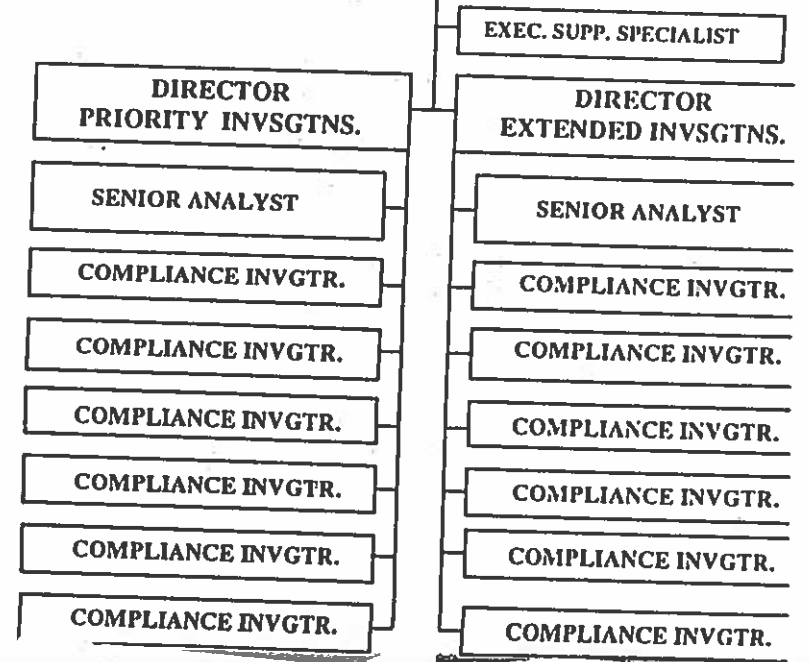
ADMINISTRATIVE ASSISTANT



DEPUTY COMMISSIONER CONSULTIVE SERVICES

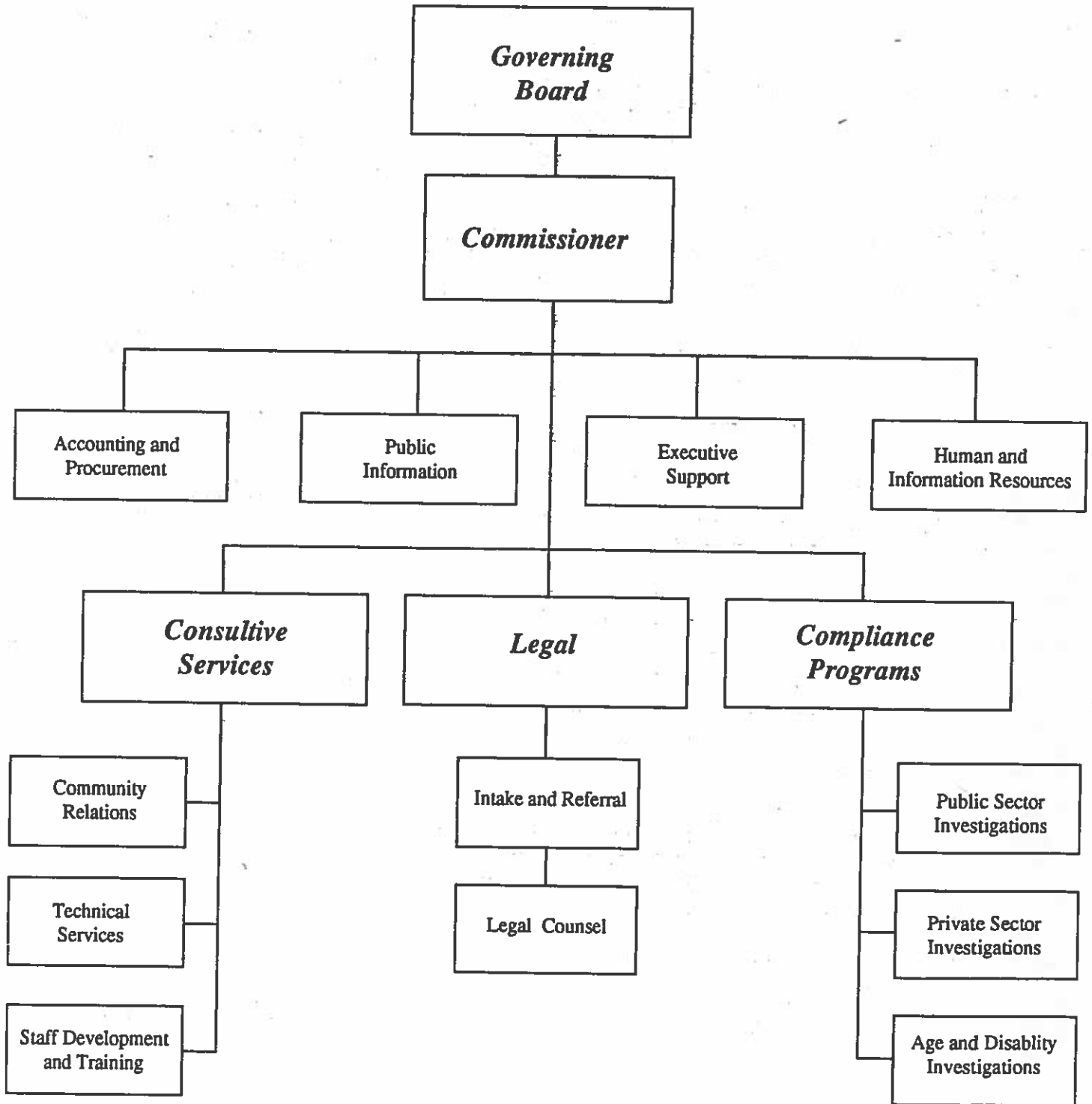


DEPUTY COMMISSIONER COMPLIANCE PROGRAMS

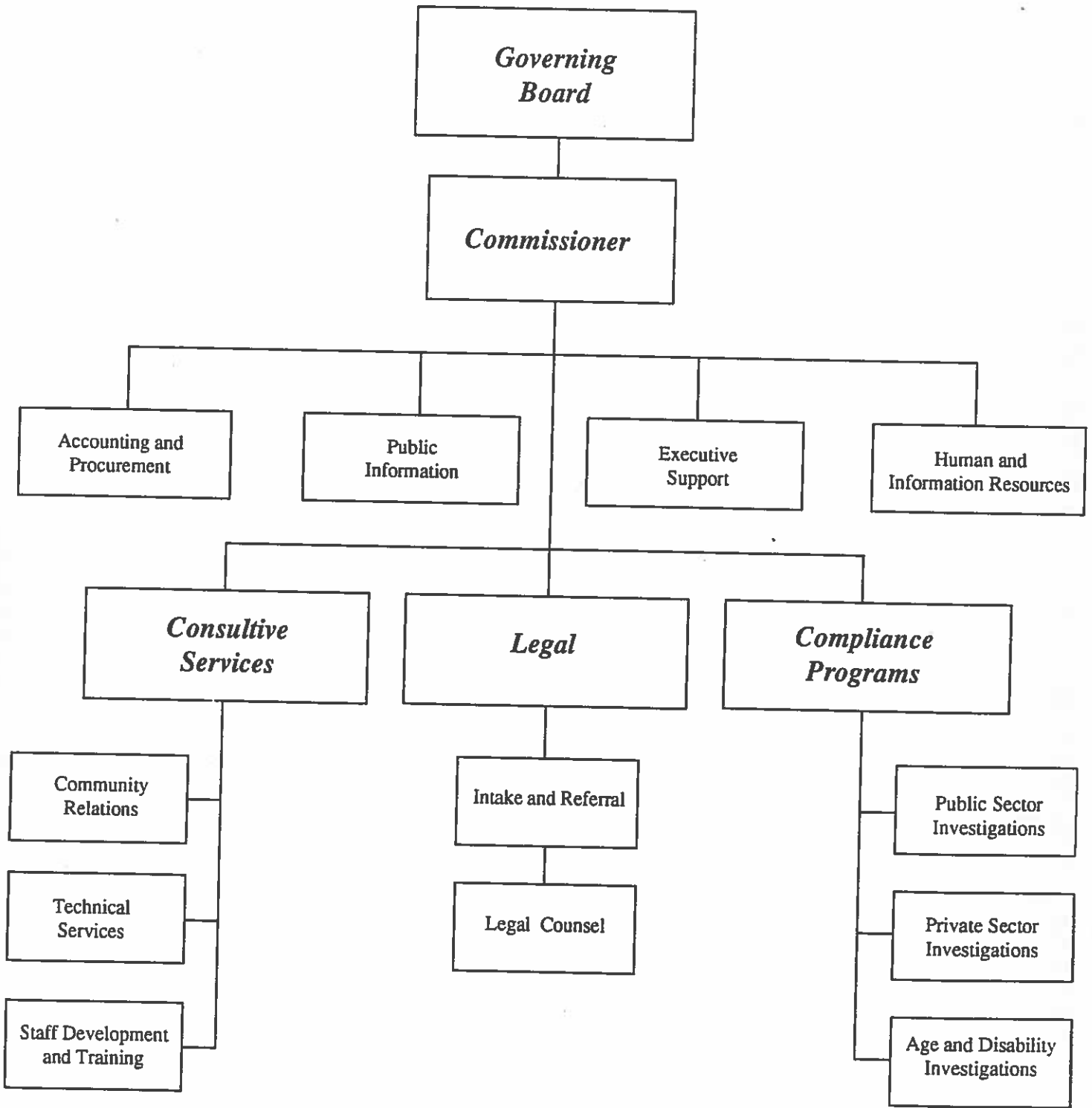


9

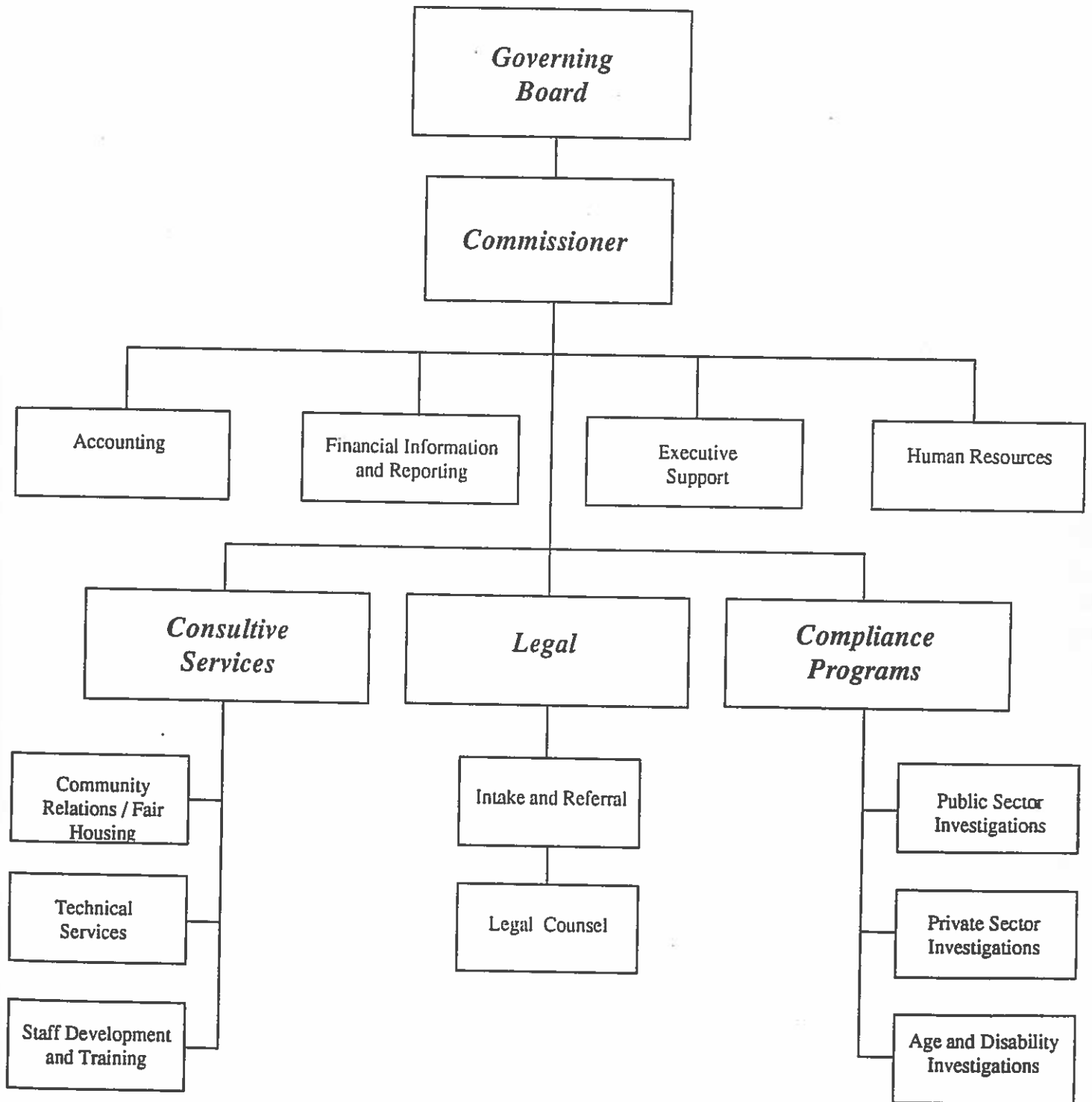
Organization Chart



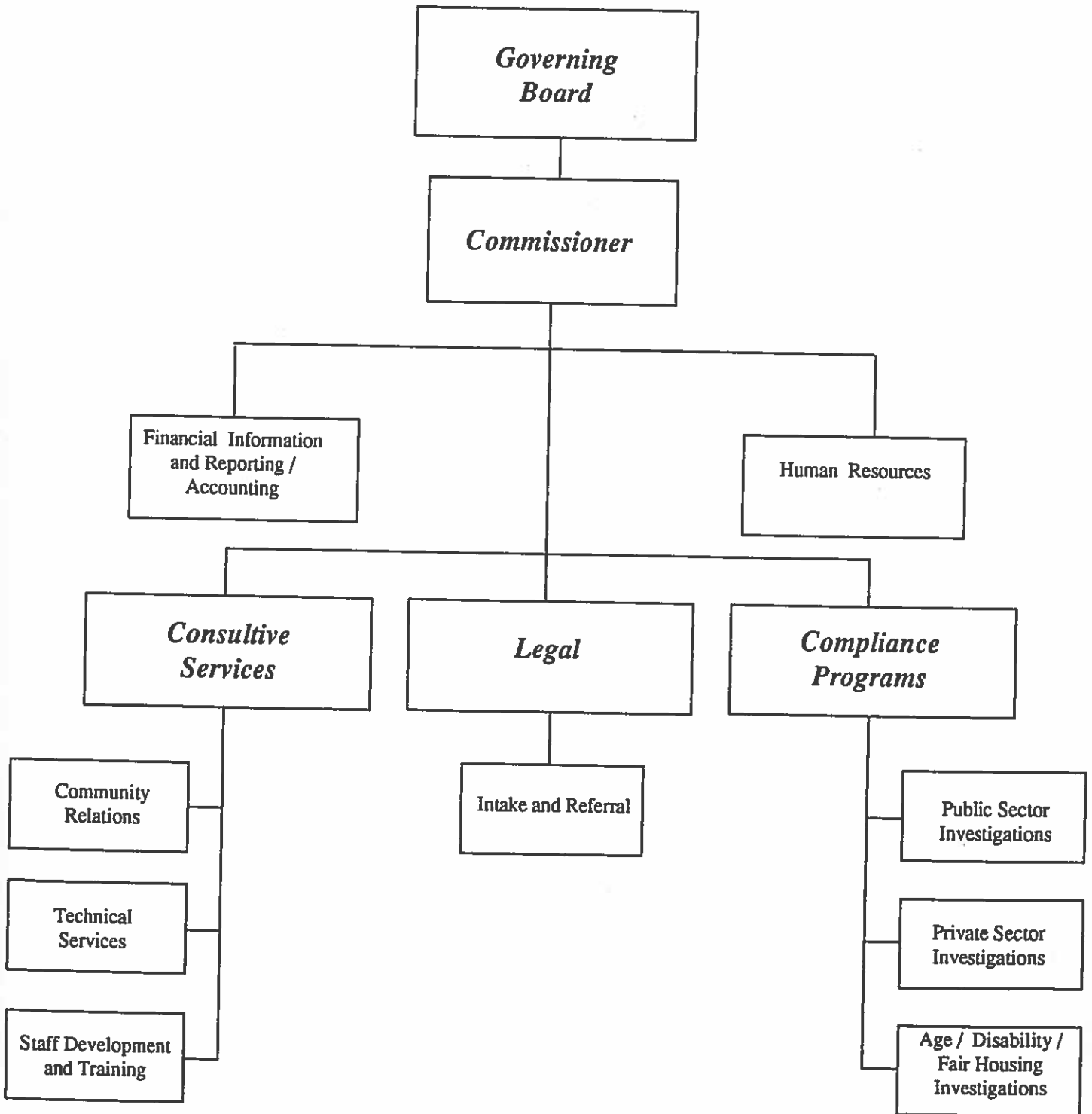
Organization Chart



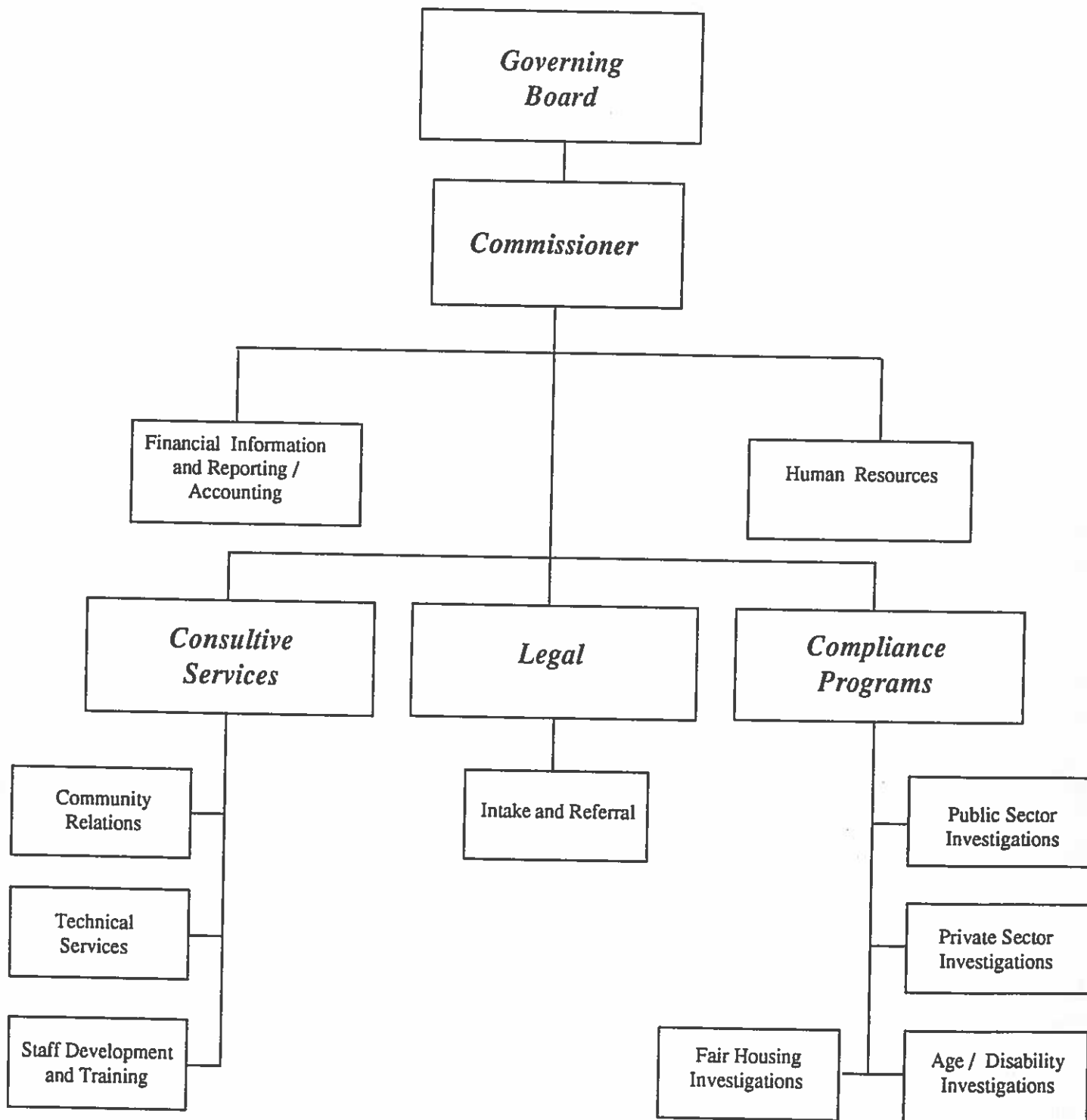
Organization Chart



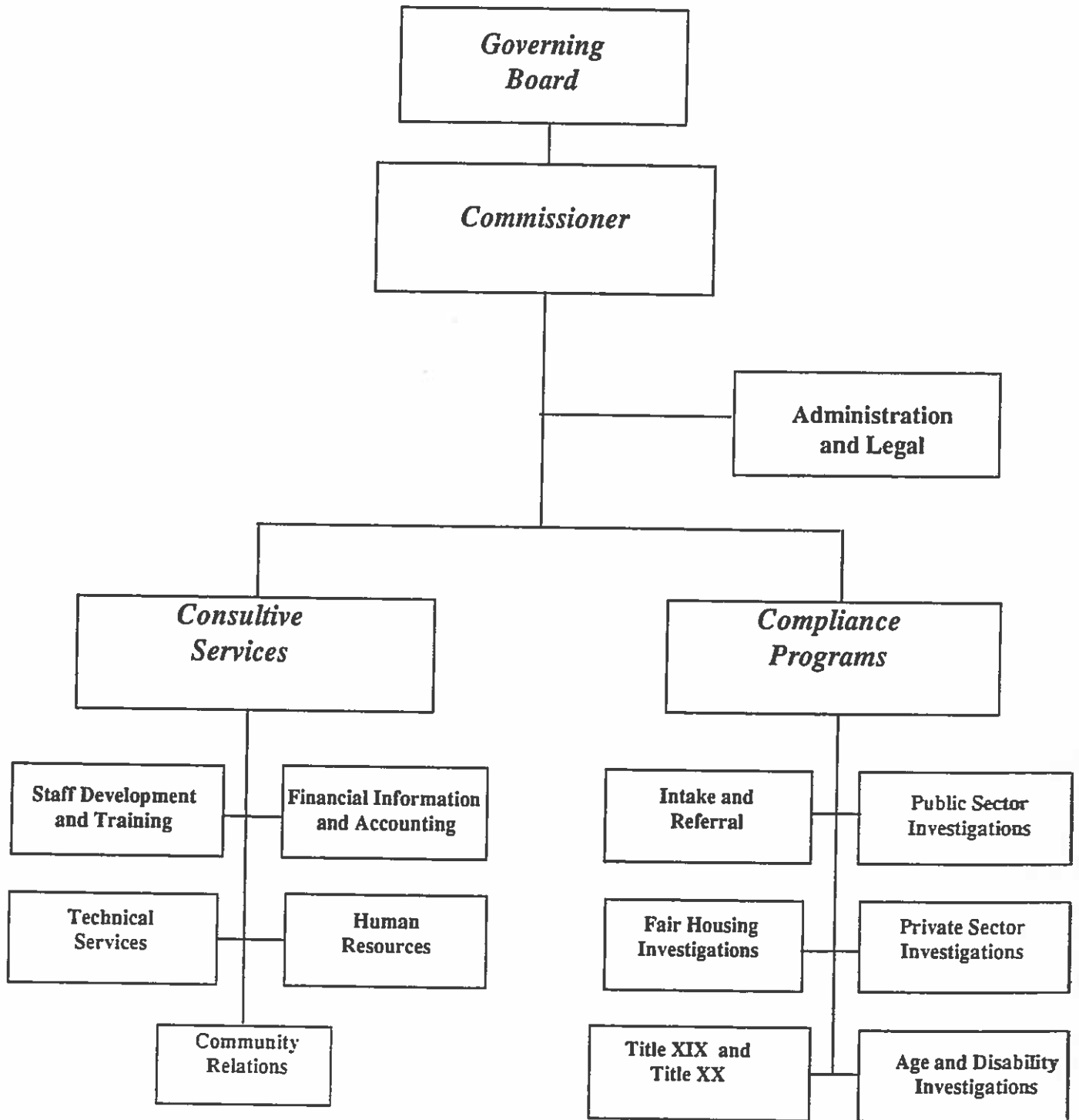
Organization Chart



Organization Chart

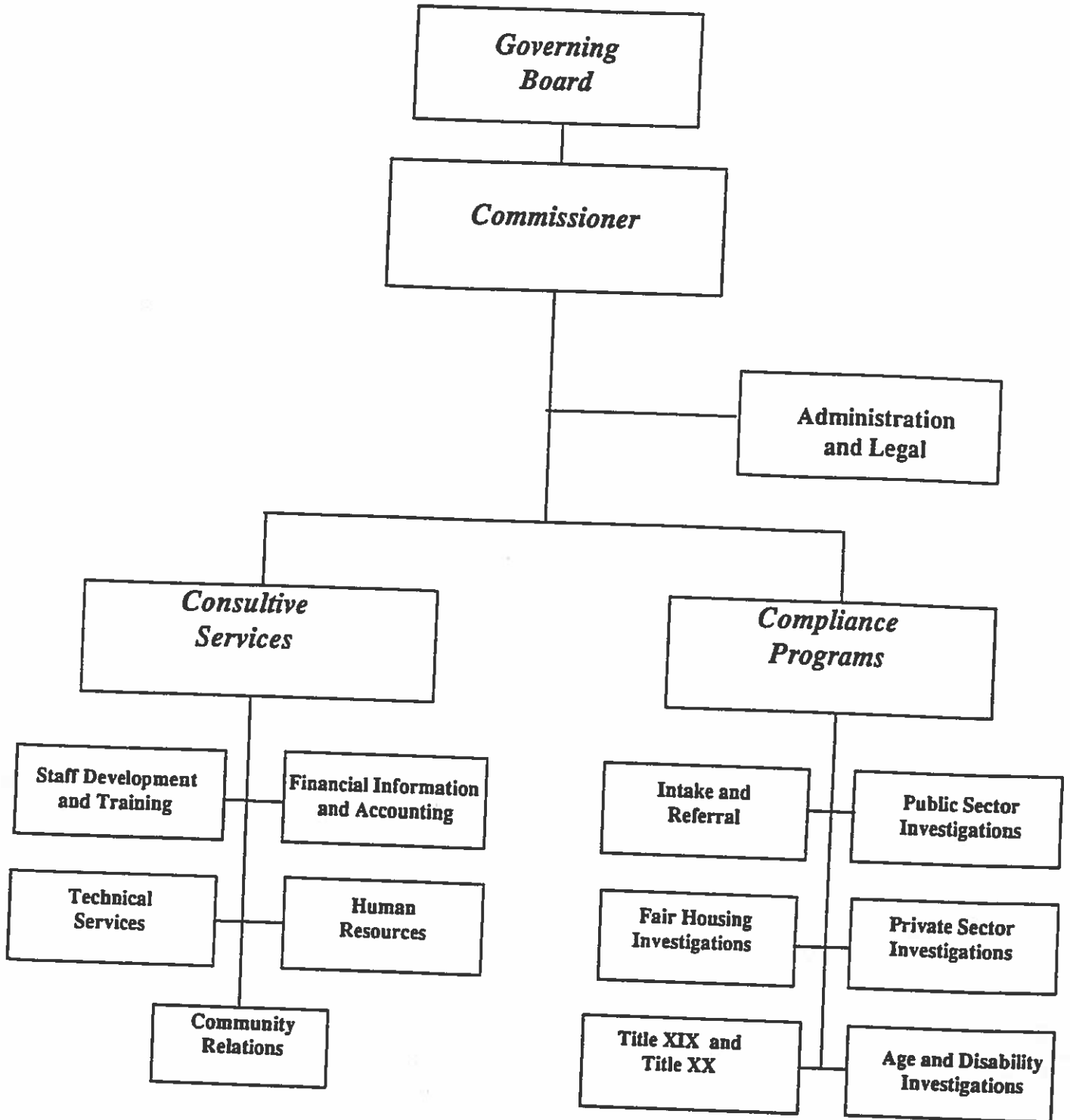


Organizational Chart

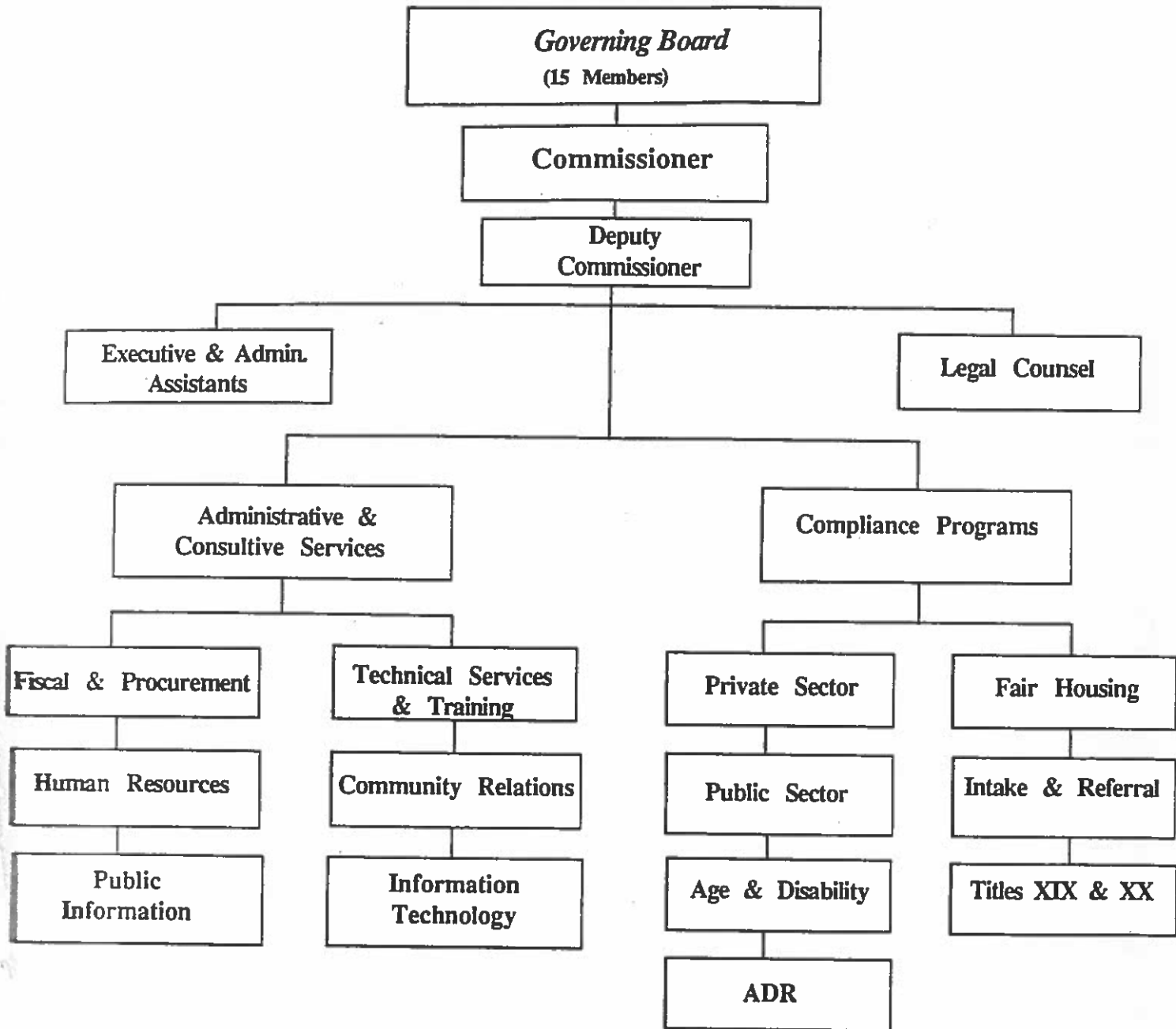


III

ORGANIZATION CHART

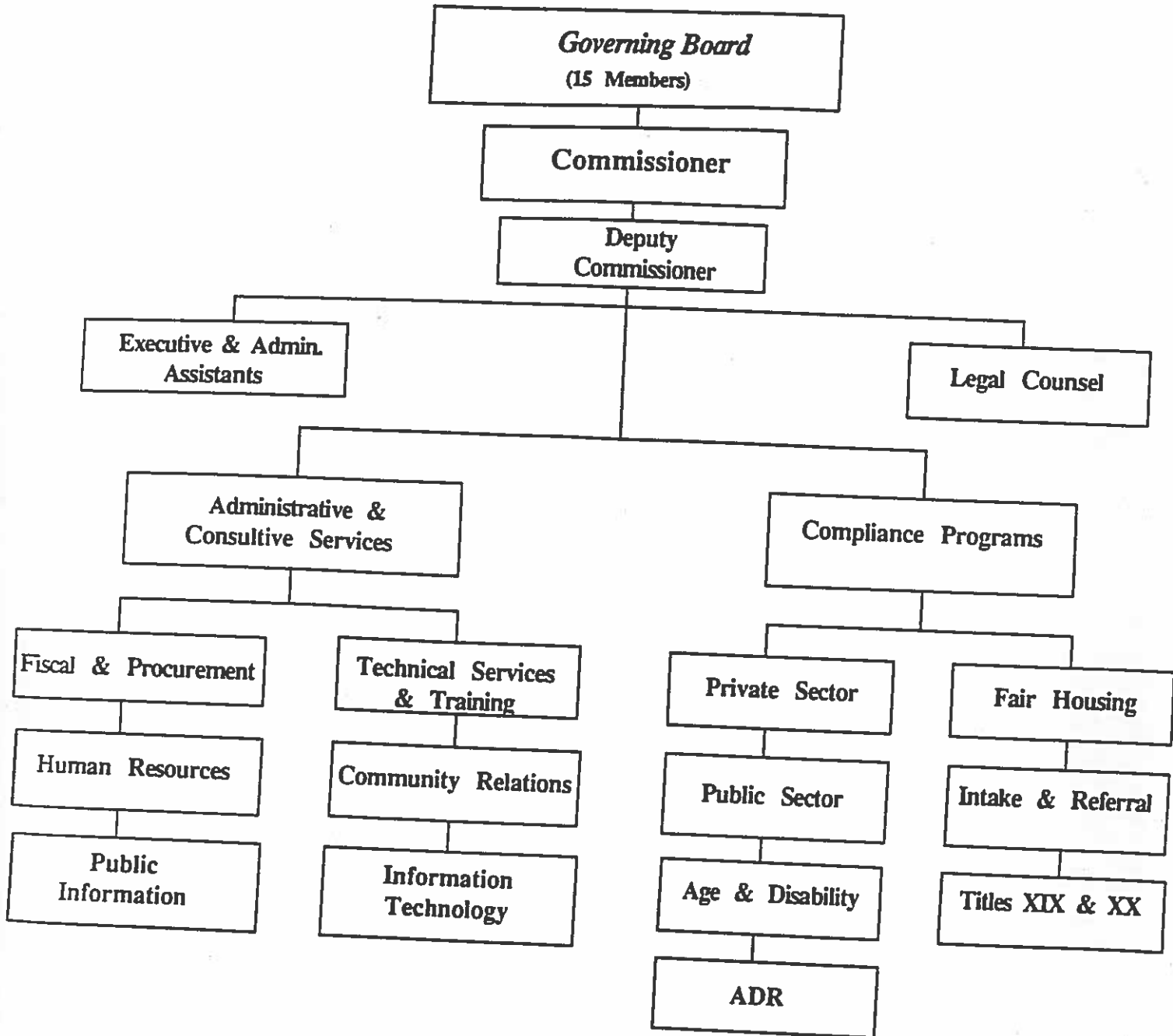


Organizational Chart



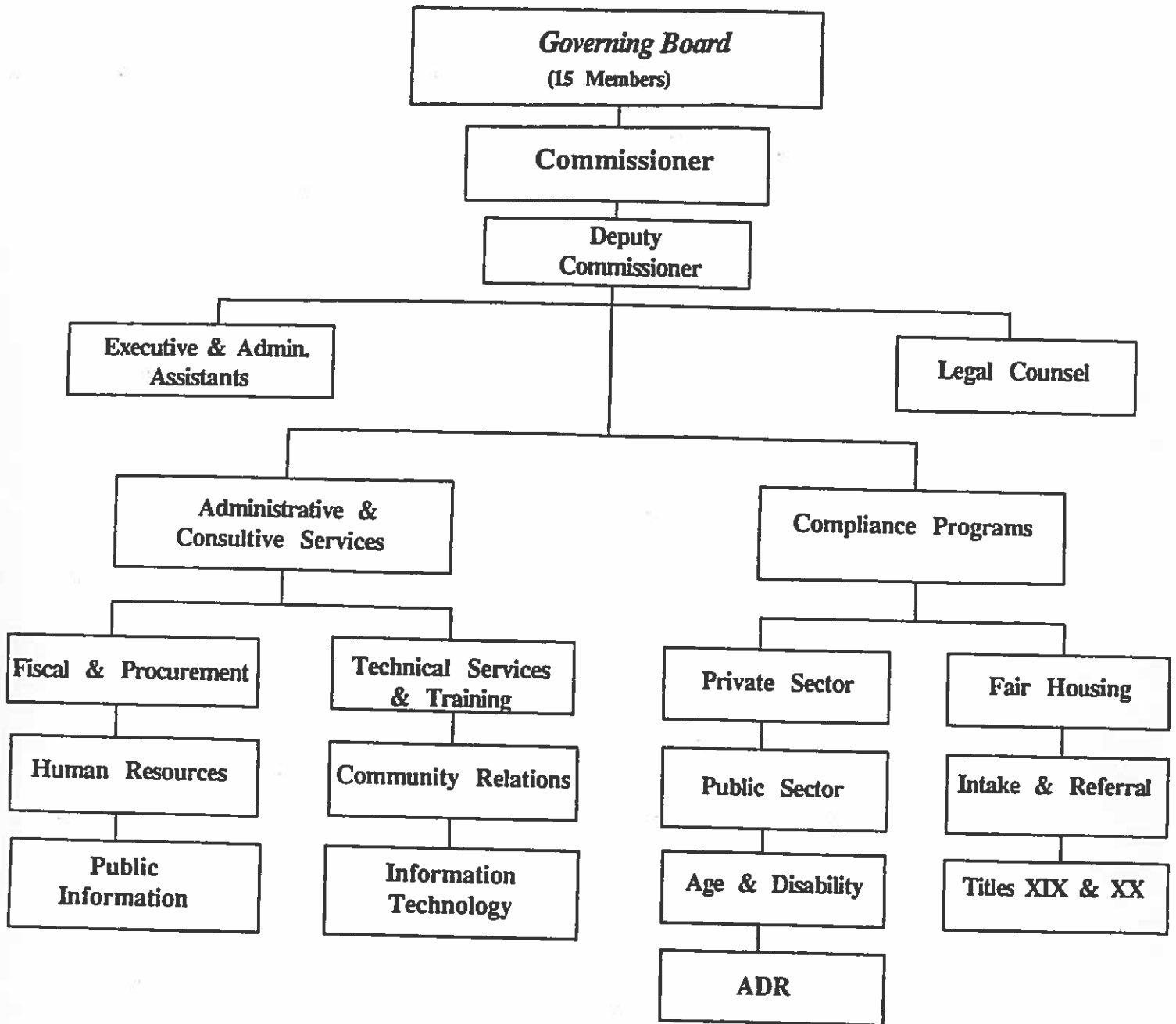
Revised 11/26/97

Organizational Chart



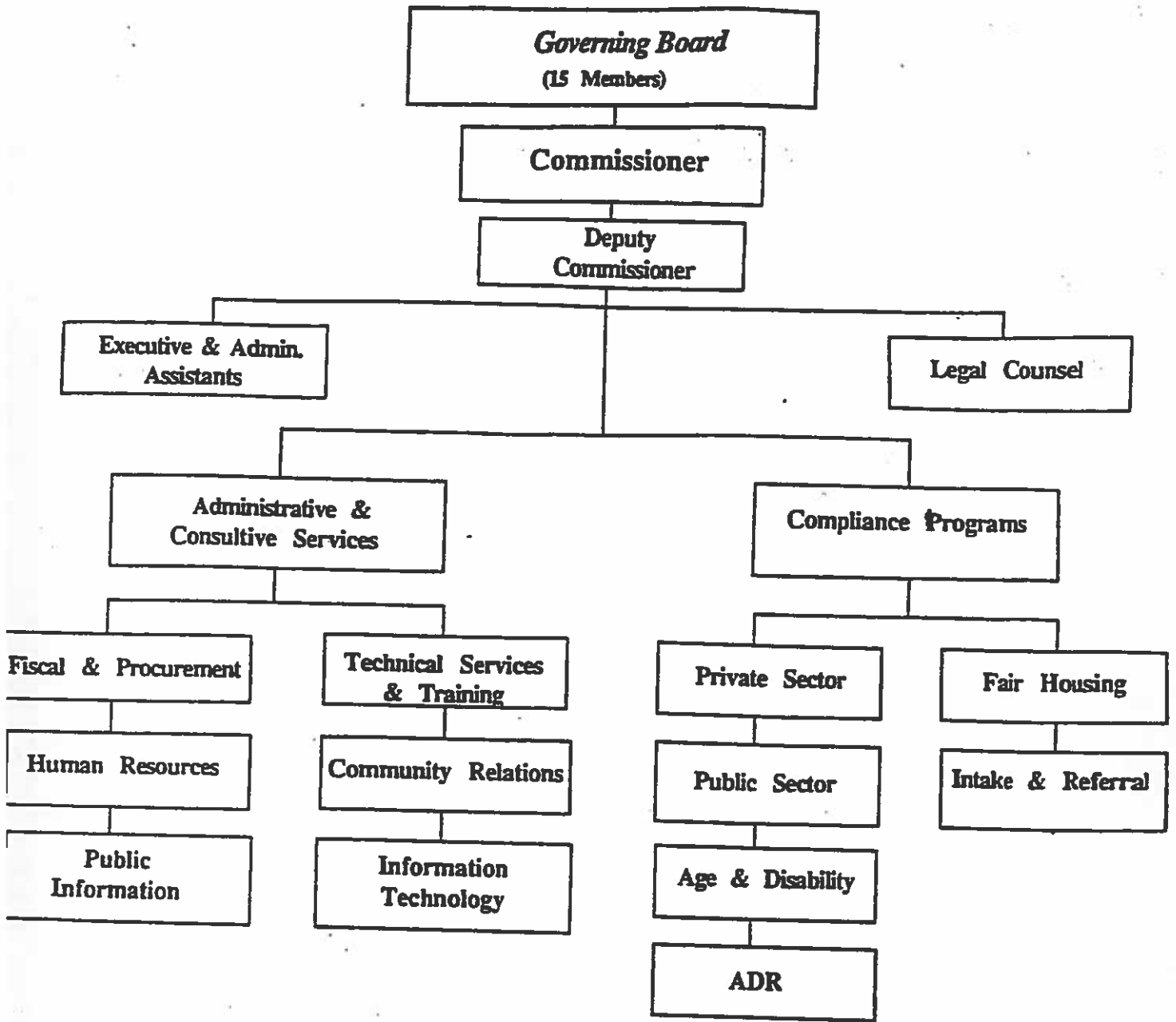
Revised 11/26/97

Organizational Chart



Revised 11/26/97

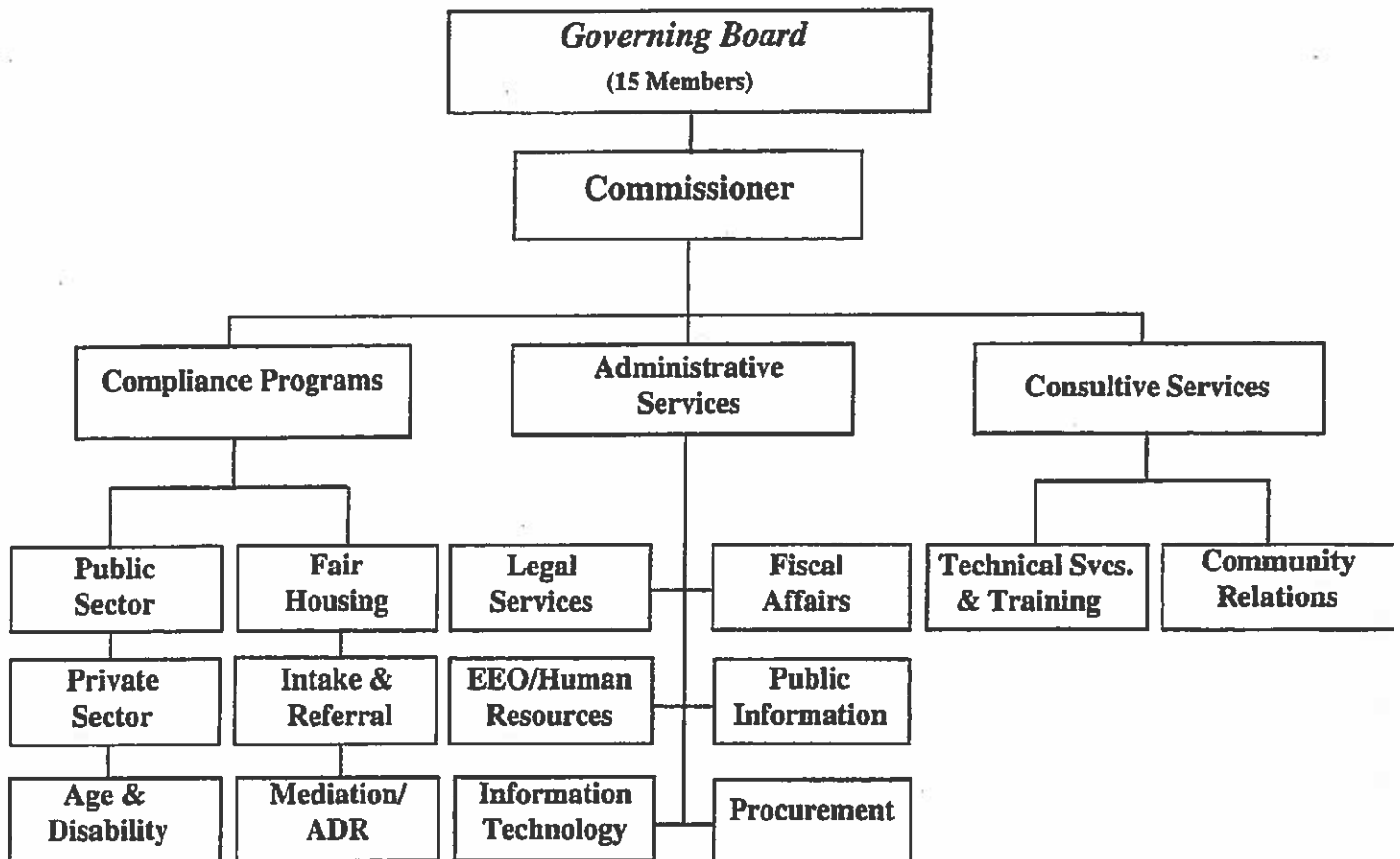
Organizational Chart



Revised 11/26/97

South Carolina Human Affairs Commission

Organizational Chart



South Carolina Human Affairs Commission Organizational Chart FY 2013-2014



Board of Commissioners

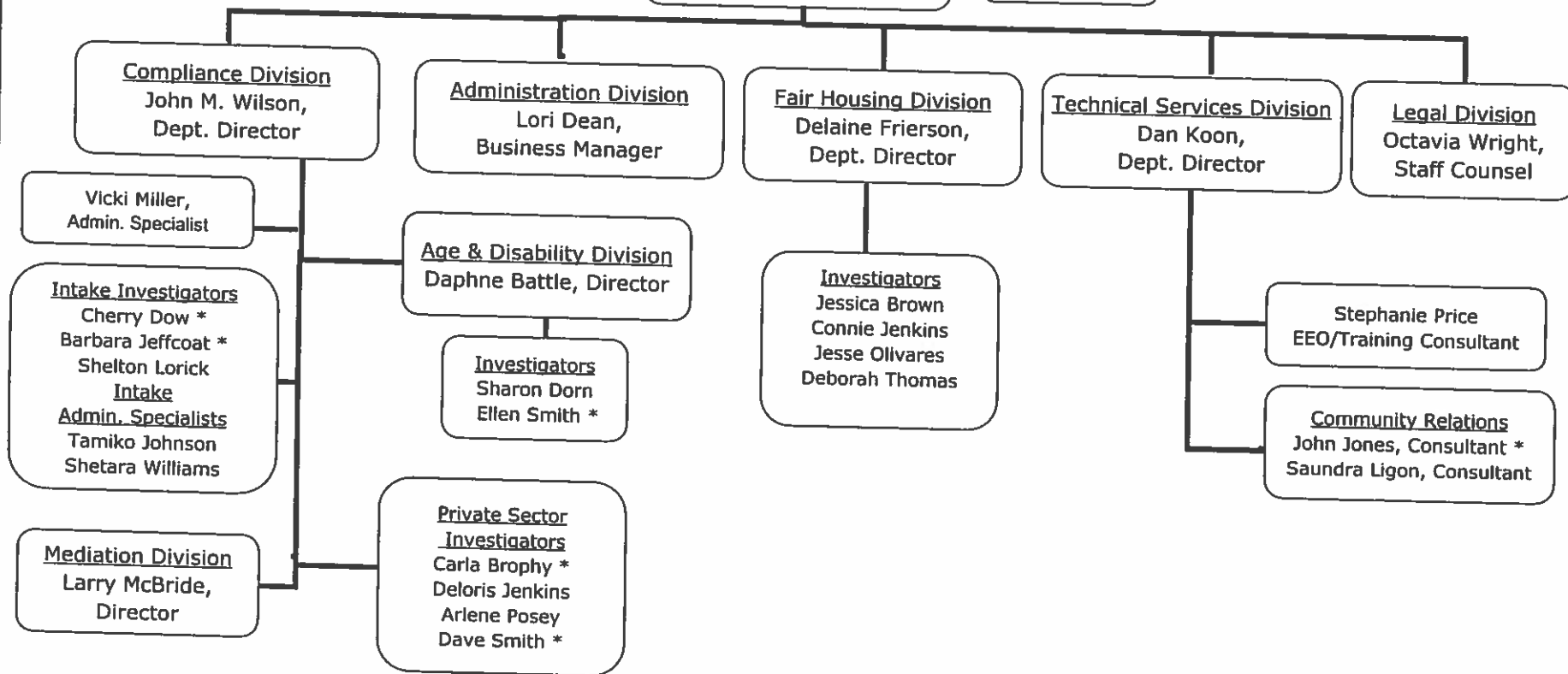
John A. Oakland, Chair

Wade C. Arnette Susan Davis Bowers Joe Fragale
Cheryl F.C. Ludlam Melanie Stith Rev. Willie A. Thompson

Betty Dennis,
Executive Assistant

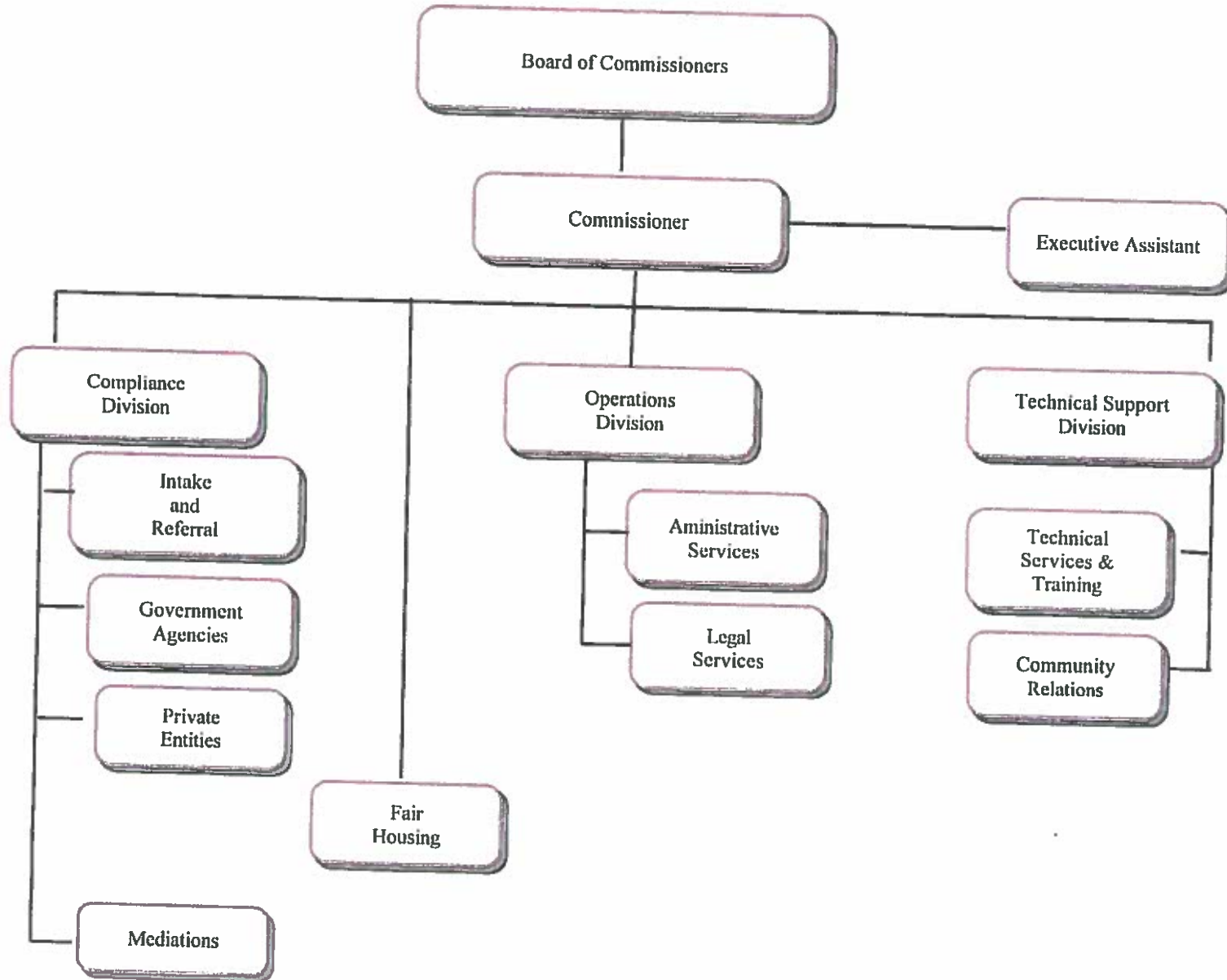
Commissioner
Raymond Buxton, II

Fran Walters,
Receptionist *



* Temp/Fill-in Fund Source

*South Carolina Human Affairs Commission
Organizational Chart
FY 2013-2014*



South Carolina Human Affairs Commission Organizational Chart FY 2013-2014



Board of Commissioners

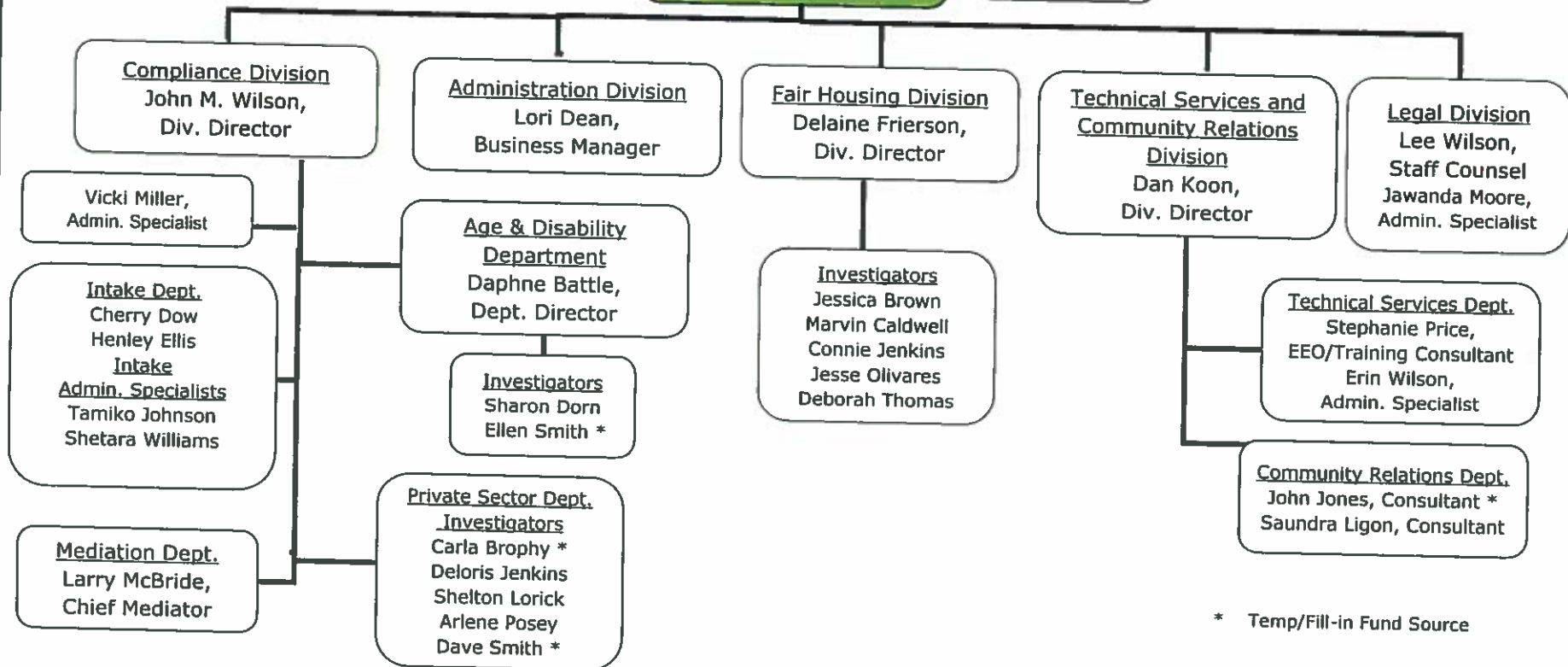
John A. Oakland, Chair

Wade C. Arnette Susan Davis Bowers Joe Fragale
Cheryl F.C. Ludlam Melanie Stith Rev. Willie A. Thompson

Commissioner Raymond Buxton, II

Betty Dennis,
Executive Assistant

Fran Walters,
Receptionist *



* Temp/Fill-in Fund Source

South Carolina Human Affairs Commission Organizational Chart FY 2013-2014



Board of Commissioners

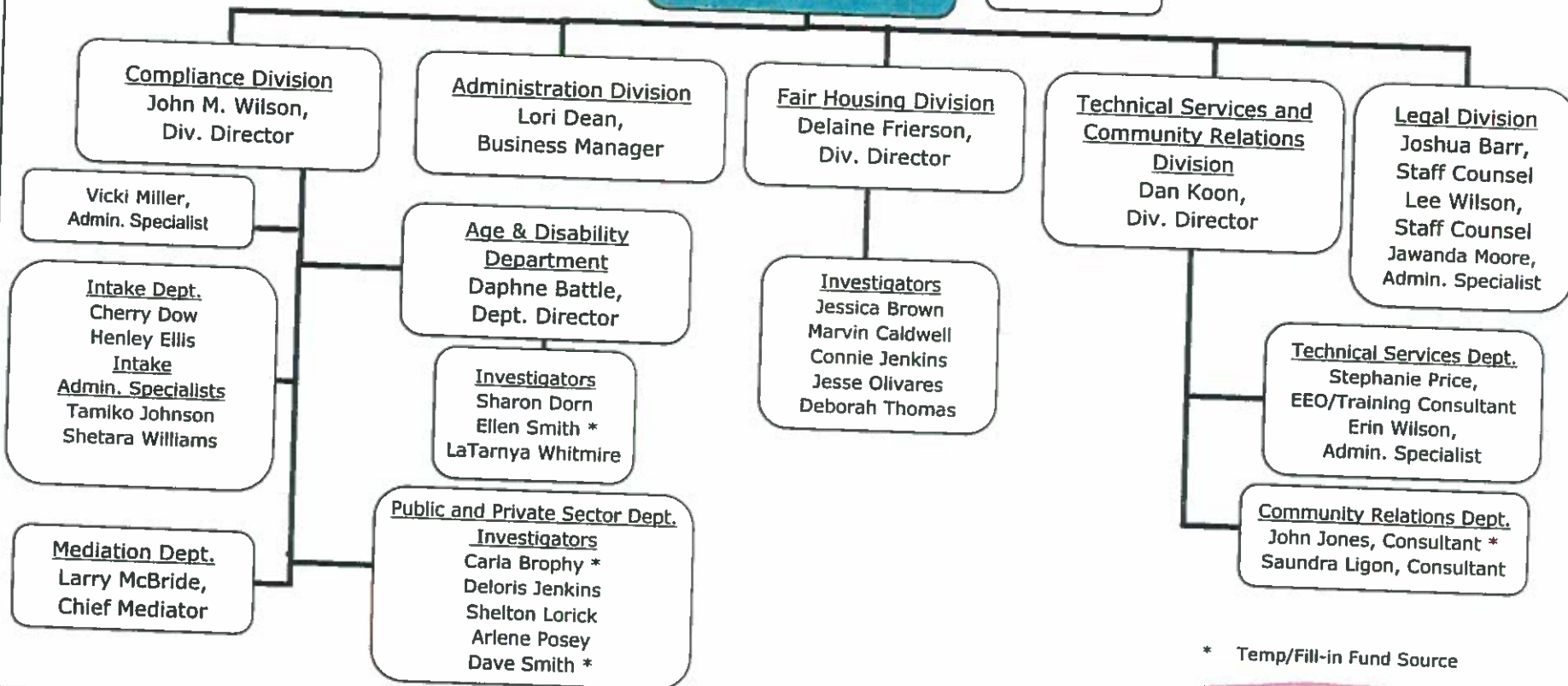
John A. Oakland, Chair

Wade C. Arnette Susan Davis Bowers Joe Fragale
Cheryl F.C. Ludlam Melanie Stith Rev. Willie A. Thompson

Betty Dennis,
Executive Assistant

Commissioner
Raymond Buxton, II

Fran Walters,
Receptionist *



* Temp/Fill-in Fund Source

Latest Revision November 5, 2013

South Carolina Human Affairs Commission Organizational Chart FY 2014-2015



Board of Commissioners

John A. Oakland, Chair

Susan Davis Bowers Harold Jean Brown Ashley P. Case

Joe Fragale Cheryl F. C. Ludlam

Rev. Willie A. Thompson

Betty Dennis,
Executive Assistant

**Commissioner
Raymond Buxton, II**

Compliance Division
Dan Koon,
Acting Director

Vicki Miller,
Admin. Specialist

Davon
Reaves,
Receptionist

Intake Dept.
Angela D. Adams
Cherry Dow
Henley Ellis
Shetara Williams
Admin. Specialist
Fran Walters *

Mediation Dept.
Larry McBride *
Chief Mediator

Fair Housing Division
Delaine Frierson,
Div. Director

Investigators
Marvin Caldwell
Connie Jenkins
Jesse Olivares
Anthony Sellers
Deborah Thomas
Admin Specialist
Tamiko Johnson

**Public and Private
Sector Dept.**
Investigators
Carla Brophy *
Deloris Jenkins
Shelton Lorick
Tenika Moore
Arlene Posey
Dave Smith

Administration Division
Lori Dean,
Business Manager

**Age & Disability
Department**

Investigators
Sharon Dorn
Reginald Green
Ellen Smith *
LaTarnya Whitmire

**Technical Services and
Community Relations
Division**
Dan Koon,
Div. Director

Technical Services Dept.
Stephanie Price,
EEO/Training Consultant
Erin Wilson,
Admin. Specialist

**Community Relations
Dept.**
John Jones, Consultant *
Saundra Ligon, Consultant

Legal Division
Joshua Barr,
Staff Counsel
Lee Ann Wooten
Rice
Staff Counsel
Jawanda Moore,
Admin. Specialist

* Temp/Fill-in Fund Source

Latest Revision November 1, 2014

Effective 2/2/15

South Carolina Human Affairs Commission Organizational Chart FY 2014-2015



Board of Commissioners
John A. Oakland, Chair
 Susan Davis Bowers Harold Jean Brown Ashley P. Case
 Joe Fragale Cheryl F. C. Ludlam Rev. Willie A. Thompson

Commissioner
Raymond Buxton, II
 Betty Dennis, Executive Assistant

Deputy Commissioner
Dan Koon
 Davon Reaves, Receptionist

Compliance Division
 Dan Koon, Acting Director

Vicki Miller, Admin. Coordinator

Intake Dept.
 Angela D. Adams
 Cherry Dow
 Henley Ellis
 Shetara Williams
 Admin. Specialist
 Fran Walters *

Fair Housing Division
 Joshua V. Barr, Div. Director

Investigators
 Marvin Caldwell
 Connie Jenkins
 Jesse Olivares
 Deborah Thomas
 Admin Specialist
 Tamiko Johnson

Public & Private Sector Dept. Investigators
 Carla Brophy *
 Deloris Jenkins
 Shelton Lorick
 Tenika Moore
 Ariene Posey
 Anthony Sellers
 Dave Smith

Administration Division
 Lori Dean, Administrative Manager

Age & Disability Department
Investigators
 Sharon Dorn
 Reginald Green
 Ellen Smith *
 LaTarnya Whitmire

Technical Services & Community Relations Division
 Dan Koon, Acting Director

Mediation Dept.
 Larry McBride *
 Chief Mediator

Technical Services Dept.
 Stephanie Price,
 EEO/Training Consultant
 Erin Wilson,
 EEO/Training Consultant

Community Relations Dept.
 John Jones, Consultant *
 Sandra Ligon, Consultant

Legal Division
 Joshua V. Barr, Staff Counsel
 Lee Ann Rice, Staff Counsel

Jawanda Moore, Admin. Specialist

* Temp/Fill-in Fund Source

Latest Revision Feb. 4, 2015

Effective 3/5/15

South Carolina Human Affairs Commission Organizational Chart FY 2014-2015



Board of Commissioners

John A. Oakland, Chair

Susan Davis Bowers Harold Jean Brown Ashley P. Case

Joe Fragale Cheryl F. C. Ludlam Rev. Willie A. Thompson

Betty Dennis,
Executive Assistant

Commissioner
Raymond Buxton, II

Davon Reaves,
Receptionist

Deputy Commissioner
Dan Koon

Compliance Division
Dan Koon,
Acting Director

Vicki Miller,
Admin. Coordinator

Kendal Russell *
Admin. Assistant

Intake Dept.
Angela D. Adams
Cherry Dow
Henley Ellis
Shetara Williams
Admin. Specialist
Fran Walters *

Fair Housing Division
Joshua V. Barr,
Div. Director

Investigators
Marvin Caldwell
Connie Jenkins
Jesse Olivares
Anthony Sellers
Deborah Thomas
Admin. Specialist
Tamiko Johnson

Public & Private
Sector Dept. Investigators
Carla Brophy *
Rosemary Drake *
Deloris Jenkins
Shelton Lorick
Tenika Moore
Arlene Posey
Dave Smith

Administration
Division
Lori Dean,
Administrative
Manager

Mediation Dept.
Larry McBride *
Chief Mediator

Age & Disability
Department
Investigators
Sharon Dorn
Reginald Green
Ellen Smith *
LaTarnya Whitmire

Technical Services &
Community Relations
Division
Dan Koon,
Acting Director

Technical Services Dept.
Stephanie Price,
EEO/Training Consultant
Erin Wilson,
EEO/Training Consultant

Community Relations
Dept.
John Jones, Consultant *
Saundra Ligon, Consultant

Legal Division
Lee Ann Rice,
Staff Counsel

Jawanda
Moore,
Admin.
Specialist

* Temp/Fill-in Fund Source

Latest Revision March 10, 2015

Effective 4/1/15

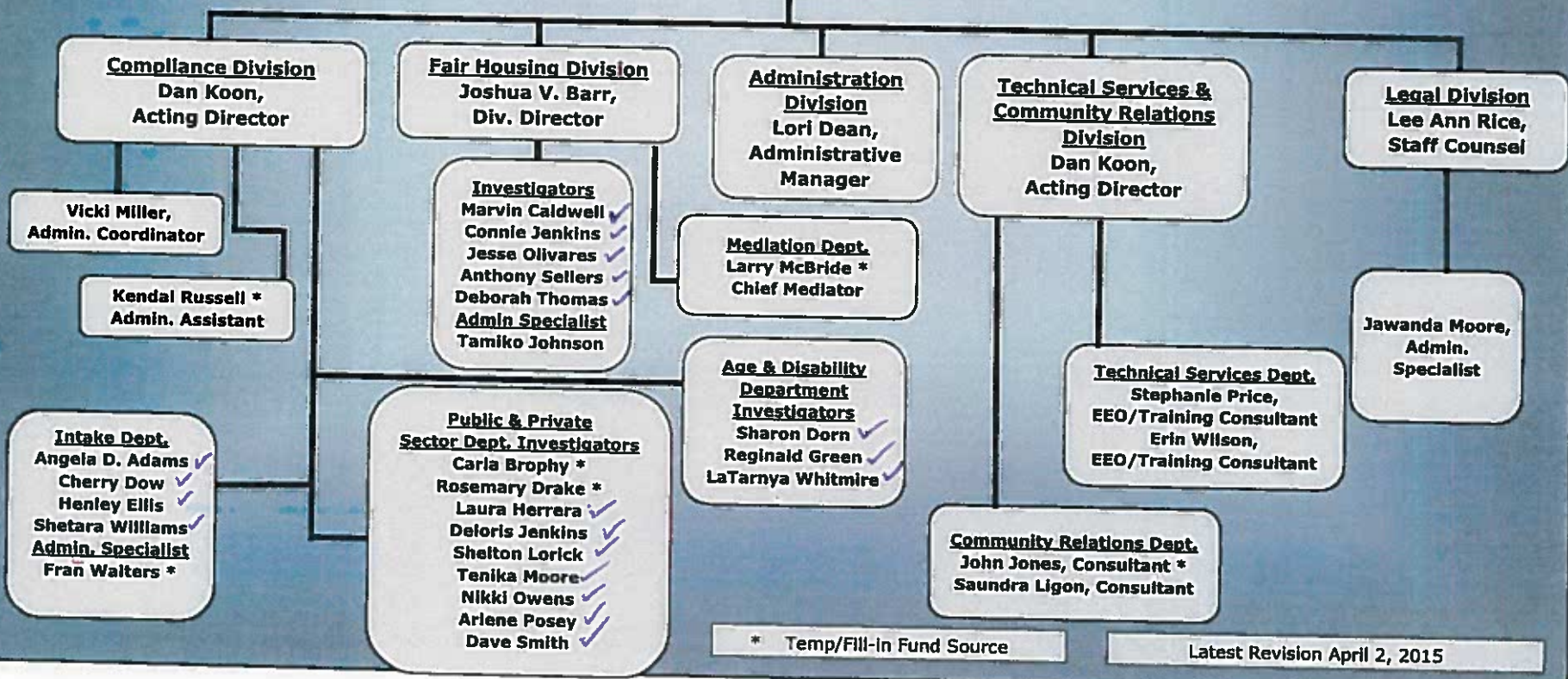
South Carolina Human Affairs Commission Organizational Chart FY 2014-2015



Board of Commissioners
John A. Oakland, Chair
 Susan Davis Bowers Harold Jean Brown Ashley P. Case
 Joe Fragale Cheryl F. C. Ludlam Rev. Willie A. Thompson

Commissioner
Raymond Buxton, II
 Betty Dennis, Executive Assistant

Deputy Commissioner
Dan Koon
 Davon Reaves, Receptionist



* Temp/Fill-in Fund Source

Latest Revision April 2, 2015

South Carolina Human Affairs Commission Organizational Chart FY 2014-2015



Board of Commissioners

John A. Oakland, Chair

Susan Davis Bowers Harold Jean Brown Ashley P. Case

Joe Fragale Cheryl F. C. Ludlam Rev. Willie A. Thompson

**Betty Dennis,
Executive Assistant**

**Commissioner
Raymond Buxton, II**

**Davon Reaves,
Receptionist**

**Deputy Commissioner
Dan Koon**

**Compliance Division
Dan Koon,
Acting Director**

**Vicki Miller,
Admin. Coordinator**

**Andrew Blankenship*
Admin. Assistant**

**Intake Dept.
Angela D. Adams
Cherry Dow
Henley Ellis
Shetara Williams
Admin. Specialist
Fran Walters ***

**Fair Housing Division
Joshua V. Barr,
Div. Director**

**Investigators
Marvin Caldwell
Connie Jenkins
Jesse Olivares
Anthony Sellers
Deborah Thomas
Admin Specialist
Tamiko Johnson**

**Public & Private
Sector Dept. Investigators
Carla Brophy *
Rosemary Drake *
Laura Herrera
Deloris Jenkins
Shelton Lorick
Tenika Moore
Nikki Owens
Arlene Posey
Dave Smith**

**Administration
Division
Lori Dean,
Administrative
Manager**

**Mediation Dept.
Larry McBride *
Chief Mediator**

**Age & Disability
Department
Investigators
Sharon Dorn
Reginald Green
LaTanya Whitmire**

**Technical Services &
Community Relations
Division
Dan Koon,
Acting Director**

**Technical Services Dept.
Stephanie Price,
EEO/Training Consultant
Erin Wilson,
EEO/Training Consultant**

**Community Relations Dept.
John Jones, Consultant *
Saundra Ligon, Consultant**

**Legal Division
Lee Ann Rice,
Staff Counsel**

**Jawanda Moore,
Admin.
Specialist**

* Temp/Fill-in Fund Source

Latest Revision May 4, 2015

Effective 6/2/15

South Carolina Human Affairs Commission Organizational Chart FY 2014-2015



Board of Commissioners

John A. Oakland, Chair

Susan Davis Bowers Harold Jean Brown Ashley P. Case

Joe Fragale Cheryl F. C. Ludlam Rev. Wille A. Thompson

Betty Dennis,
Executive Assistant

Commissioner
Raymond Buxton, II

Davon Reaves,
Receptionist

Deputy Commissioner
Dan Koon

Compliance Division
Dan Koon,
Acting Director

Vicki Miller,
Admin. Coordinator

Andrew Blankenship *
Admin. Assistant

Intake Dept.
Angela D. Adams
Cherry Dow
Henley Ellis
Shetara Williams
Admin. Specialist
Fran Walters *

Fair Housing Division
Joshua V. Barr,
Div. Director

Investigators
Marvin Caldwell
Connie Jenkins
Anthony Sellers
Deborah Thomas
Admin Specialist
Tamiko Johnson

Public & Private Sector Dept. Investigators
Rosemary Drake *
Laura Herrera
Deloris Jenkins
Shelton Lorick
Tenika Moore
Nikki Owens
Arlene Posey
Dave Smith

Administration Division
Lori Dean,
Administrative Manager

Mediation Dept.
Larry McBride *
Chief Mediator

Age & Disability Department Investigators
Sharon Dorn
Reginald Green
LaTarnya Whitmire

Technical Services & Community Relations Division
Dan Koon,
Acting Director

Technical Services Dept.
Stephanie Price,
EEO/Training Consultant
Erin Wilson,
EEO/Training Consultant

Community Relations Dept.
Anita Dantzler*, Consultant
Saundra Ligon, Consultant

Legal Division
Lee Ann Rice,
Staff Counsel

Jawanda Collier,
Admin. Specialist

* Temp/Fill-in Fund Source

Latest Revision June 2, 2015

Ctective 7/13/15

South Carolina Human Affairs Commission Organizational Chart FY 2014-2015



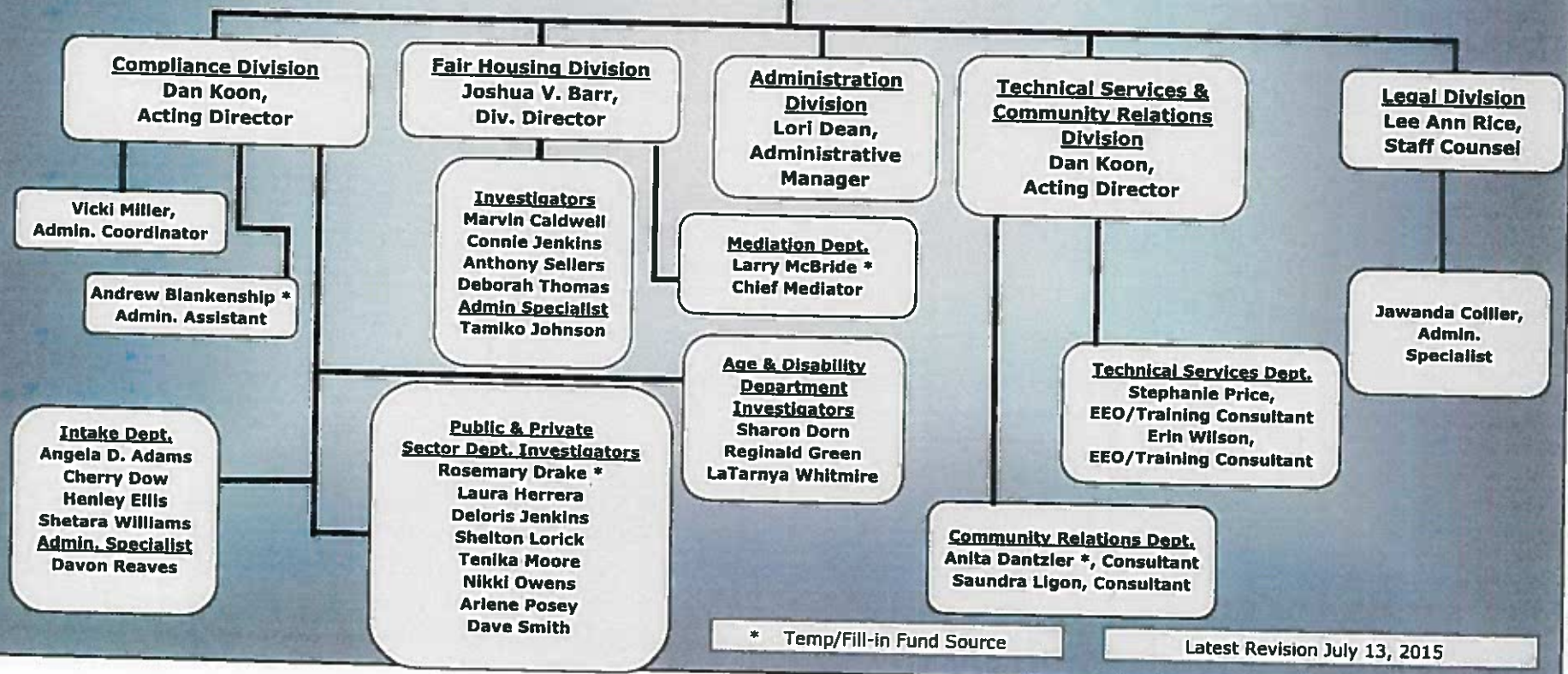
Board of Commissioners
John A. Oakland, Chair
 Susan Davis Bowers Harold Jean Brown Ashley P. Case
 Joe Fragale Cheryl F. C. Ludlam Rev. Willie A. Thompson

Betty Dennis,
Executive Assistant

Commissioner
Raymond Buxton, II

Melanie Goff *
Receptionist

Deputy Commissioner
Dan Koon



* Temp/Fill-in Fund Source

Latest Revision July 13, 2015

South Carolina Human Affairs Commission Organizational Chart FY 2015-2016



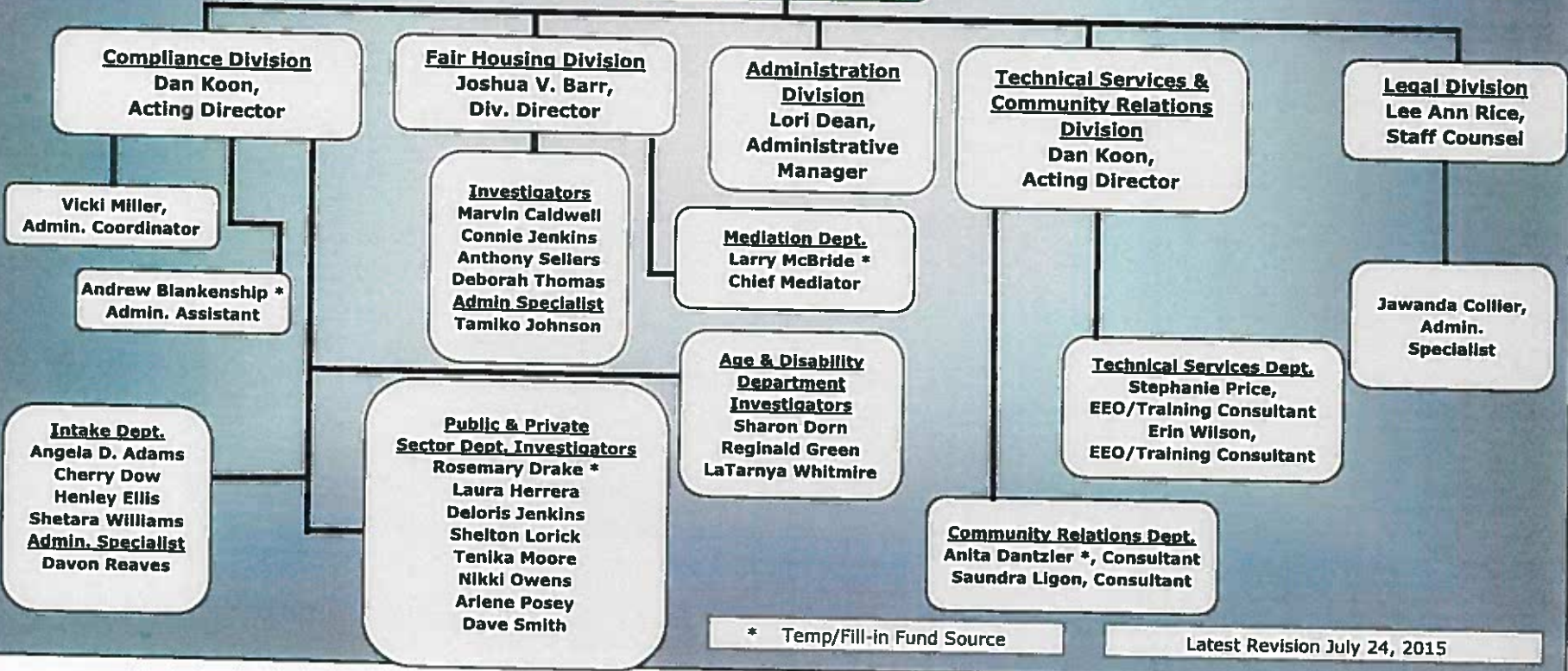
Board of Commissioners
 John A. Oakland, Chair
 Susan Davis Bowers Harold Jean Brown Ashley P. Case
 Joe Fragale Cheryl F. C. Ludlam Rev. Willie A. Thompson
 A C Williams

Commissioner
 Raymond Buxton, II

Deputy Commissioner
 Dan Koon

Betty Dennis, Executive Assistant

Melanie Goff * Receptionist



* Temp/Fill-in Fund Source

Latest Revision July 24, 2015

Effective 9/17/15

South Carolina Human Affairs Commission Organizational Chart FY 2015-2016



Board of Commissioners
 John A. Oakland, Chair
 Susan Davis Bowers Harold Jean Brown Ashley P. Case
 Joe Fragale Cheryl F. C. Ludlam Rev. Willie A. Thompson
 A C Williams

Betty Dennis,
Executive Assistant

Commissioner
Raymond Buxton, II

Melanie Goff *
Receptionist

Deputy Commissioner
Dan Koon

Compliance Division
Dan Koon,
Acting Director

Vicki Miller,
Admin. Coordinator

Andrew Blankenship *
Admin. Assistant

Intake Dept.
Angela D. Adams
Cherry Dow
Henley Ellis
Shetara Williams
Admin. Specialist
Davon Reaves

Fair Housing Division
Joshua V. Barr,
Div. Director

Investigators
Marvin Caldwell
Connie Jenkins
Anthony Sellers
Deborah Thomas
Admin Specialist
Tamiko Johnson

Public & Private Sector Dept. Investigators
Rosemary Drake
Laura Herrera
Deloris Jenkins
Shelton Lorick
Tenika Moore
Nikki Owens
Arlene Posey
Dave Smith

Mediation Dept.
Larry McBride *
Chief Mediator

Age & Disability Department Investigators
Sharon Dorn
Reginaid Green
LaTarnya Whitmire

Administration Division
Lori Dean,
Administrative Manager

Crystal Hayes,
Fiscal Tech II

Technical Services & Community Relations Division
Dan Koon,
Acting Director

Technical Services Dept.
Stephanie Price,
EEO/Training Consultant
Erin Wilson,
EEO/Training Consultant

Community Relations Dept.
Anita Dantzler *, Consultant
Saundra Ligon, Consultant

Legal Division
Lee Ann Rice,
Staff Counsel

Jawanda Collier,
Admin. Specialist

* Temp/Fill-in Fund Source

Latest Revision Sept. 17, 2015

K Effective 10/19/15

South Carolina Human Affairs Commission Organizational Chart FY 2015-2016

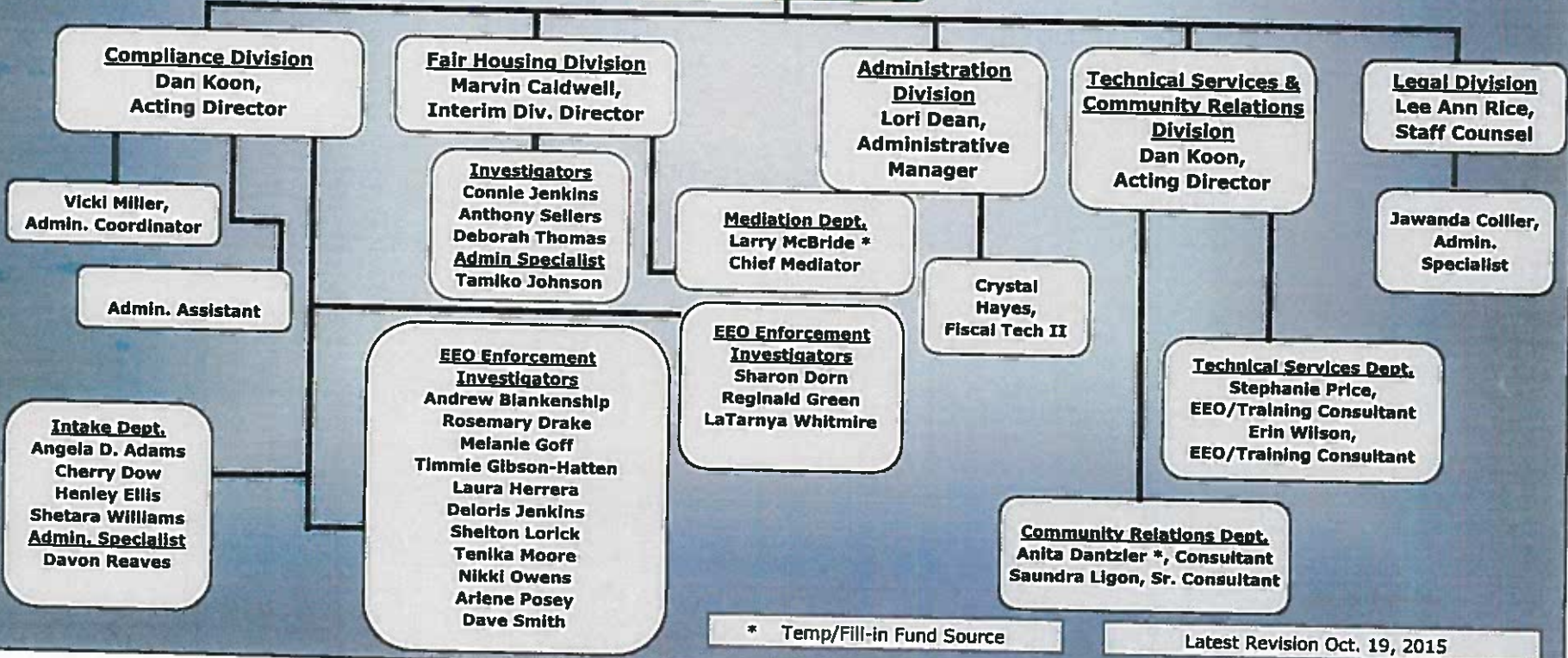


Board of Commissioners
 John A. Oakland, Chair
 Susan Davis Bowers Harold Jean Brown Ashley P. Case
 Joe Fragale Cheryl F. C. Ludlam Rev. Willie A. Thompson
 A C Williams

Commissioner
 Raymond Buxton, II

Deputy Commissioner
 Dan Koon

Betty Dennis, Executive Assistant
 Melanie Goff Receptionist



* Temp/Fill-in Fund Source

Latest Revision Oct. 19, 2015

Effective 12/2/15

South Carolina Human Affairs Commission Organizational Chart FY 2015-2016



Board of Commissioners
 John A. Oakland, Chair
 Harold Jean Brown Ashley P. Case
 Joe Fragale Cheryl F. C. Ludlam Rev. Willie A. Thompson
 A C Williams

Betty Dennis,
Executive Assistant

Commissioner
Raymond Buxton, II

Melanie Goff
Receptionist

Deputy Commissioner
Dan Koon

Compliance Division
Dan Koon,
Acting Director

Fair Housing Division
Marvin Caldwell,
Interim Div. Director

Administration Division
Lori Dean,
Administrative Manager

Technical Services & Community Relations Division
Dan Koon,
Acting Director

Legal Division
Lee Ann Rice,
Staff Counsel

Vicki Miller,
Admin. Coordinator

Admin. Assistant

Investigators
Connie Jenkins
Anthony Sellers
Deborah Thomas
Admin Specialist
Tamiko Johnson

Mediation Dept.
Larry McBride *
Chief Mediator

Crystal Hayes,
Fiscal Tech II

Jawanda Collier,
Admin. Specialist

Intake Dept.
Angela D. Adams
Cherry Dow
Henley Ells
Shetara Williams
Admin. Specialist
Davon Reaves

EEO Enforcement Investigators
Alston, Brian
Andrew Blankenship
Rosemary Drake
Melanie Goff
Timmie Gibson-Hatten
Laura Herrera
Deloris Jenkins
Shelton Lorick
Tenika Moore
Nikki Owens
Arlene Posey
Dave Smith

EEO Enforcement Investigators
Sharon Dorn
Reginald Green
LaTarnya Whitmire

Technical Services Dept.
Stephanie Price,
EEO/Training Consultant
Erin Wilson,
EEO/Training Consultant

Community Relations Dept.
Anita Dantzler *, Consultant
Saundra Ligon, Sr. Consultant

* Temp/Fill-in Fund Source

Latest Revision Dec. 2, 2015

South Carolina Human Affairs Commission Organizational Chart FY 2015-2016



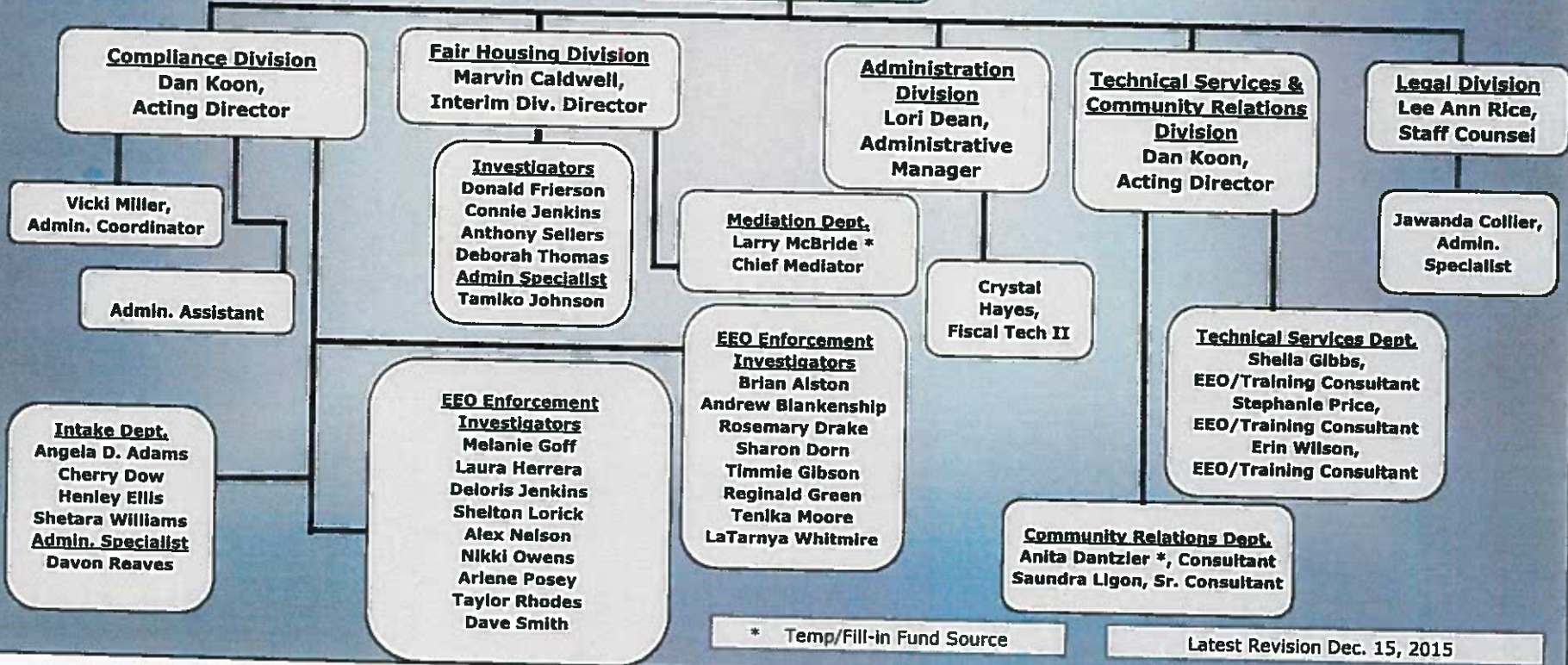
Board of Commissioners
 John A. Oakland, Chair
 Harold Jean Brown Ashley P. Case
 Joe Fragale Cheryl F. C. Ludlam Rev. Willie A. Thompson
 A C Williams

Commissioner
 Raymond Buxton, II

Deputy Commissioner
 Dan Koon

Betty Dennis, Executive Assistant

Kelly Williams* Receptionist



* Temp/Fill-in Fund Source

Latest Revision Dec. 15, 2015

South Carolina Human Affairs Commission Organizational Chart FY 2014-2015



Board of Commissioners

John A. Oakland, Chair

Susan Davis Bowers Harold Jean Brown Ashley P. Case

Joe Fragale Cheryl F. C. Ludlam Rev. Willie A. Thompson

Betty Dennis,
Executive Assistant

**Commissioner
Raymond Buxton, II**

Davon Reaves,
Receptionist

**Deputy Commissioner
Dan Koon**

Compliance Division
Dan Koon,
Acting Director

Vicki Miller,
Admin. Coordinator

Intake Dept.
Angela D. Adams
Cherry Dow
Henley Ellis
Shetara Williams
Admin. Specialist
Fran Waiters *

Mediation Dept.
Larry McBride *
Chief Mediator

Fair Housing Division
Joshua V. Barr,
Div. Director

Investigators
Marvin Caldwell
Connie Jenkins
Jesse Olivares
Deborah Thomas
Admin Specialist
Tamiko Johnson

**Public & Private
Sector Dept. Investigators**
Carla Brophy *
Deloris Jenkins
Shelton Lorick
Tenika Moore
Arlene Posey
Anthony Sellers
Dave Smith

Administration Division
Lori Dean,
Administrative Manager

**Age & Disability
Department
Investigators**
Sharon Dorn
Reginald Green
Ellen Smith *
LaTarnya Whitmire

**Technical Services &
Community Relations
Division**
Dan Koon,
Acting Director

Technical Services Dept.
Stephanie Price,
EEO/Training Consultant
Erin Wilson,
EEO/Training Consultant

**Community Relations
Dept.**
John Jones, Consultant *
Saundra Ligon, Consultant

Legal Division
Joshua V. Barr,
Staff Counsel
Lee Ann Rice,
Staff Counsel

Jawanda Moore,
Admin. Specialist

* Temp/Fill-in Fund Source

Latest Revision December 16, 2015

Effective 3/2/16

South Carolina Human Affairs Commission Organizational Chart FY 2015-2016



Board of Commissioners
 John A. Oakland, Chair
 Harold Jean Brown Ashley P. Case
 Joe Fragale Cheryl F. C. Ludlam Rev. Willie A. Thompson
 A C Williams

Betty Dennis
 Executive Assistant

Commissioner
 Raymond Buxton, II

Vicki Miller
 EEO Admin. Coordinator

Deputy Commissioner
 Dan Koon

Intake Dept.
 Henley Ellis
 Senior Consultant

Investigators
 Angela D. Adams
 Cherry Dow
 Shetara Williams
 Admin. Specialist
 Davon Reaves

Intake Receptionist
 Gwendolyn Williams*

Fair Housing Division
 Marvin Caldwell
 Interim Div. Director

Administration Division
 Lori Dean
 Administrative Manager

Technical Services Dept.
 Stephanie Price
 EEO Senior Consultant

EEO/Training Consultant
 Erin Wilson
 EEO/Training Consultant
 Shella Gibbs

Legal Division
 Lee Ann Rice
 Staff Counsel

Alex Pate
 Attorney II

Compliance Division
 Sharon Dorn, Senior Consultant
 Dave Smith, Senior Consultant/
 IT Manager

Investigators
 Don Frierson
 Connie Jenkins
 Anthony Sellers
 Deborah Thomas
 Admin Specialist
 Tamiko Johnson

Crystal Hayes
 Fiscal Tech II

Community Relations Dept.
 Sandra Ligon
 Senior Consultant

Anita Dantzler
 Consultant

Jawanda Collier
 Admin. Specialist

Dave Smith
 EEO Enforcement Dept I
 Investigators
 Rosemary Drake
 Timmie Gibson
 Melanie Goff
 Deloris Jenkins
 Nikki Owens
 Taylor Rhodes
 LaTarnya Whitmire

Sharon Dorn
 EEO Enforcement Dept II
 Investigators
 Brian Alston
 Andrew Blankenship
 Reginald Green
 Laura Herrera
 Shelton Loric
 Tenika Moore
 Alex Nelson
 Ariene Posey

Mediation
 Larry McBride *
 Chief Mediator

* Temp/Fill-in Fund Source

Latest Revision Feb. 26, 2016

South Carolina Human Affairs Commission Organizational Chart FY 2015-2016



Board of Commissioners
 John A. Oakland, Chair
 Harold Jean Brown Ashley P. Case
 Joe Fragale Cheryl F. C. Ludlam Rev. Willie A. Thompson
 A C Williams

Commissioner
 Raymond Buxton, II
Deputy Commissioner
 Dan Koon

Betty Dennis
Executive Assistant

Vicki Miller
EEO Admin. Coordinator

Intake Dept.
 Henley Ellis
Senior Consultant

Investigators
 Angela D. Adams
 Cynthia Cooke
 Cherry Dow

Admin. Specialist
 Davon Reaves
Intake Receptionist
 Gwendolyn Williams*

Fair Housing Division
 Marvin Caldwell
 Div. Director

Investigators
 Don Frierson
 Connie Jenkins
 Anthony Sellers
 Deborah Thomas
Admin Specialist
 Tamiko Johnson

Administration Division
 Lori Dean
 Administrative Manager

 Marcus Sumter
 Fiscal Tech II

Technical Services Dept.
 Stephanie Price
EEO Senior Consultant

 EEO/Training Consultant
 Erin Wilson
 EEO/Training Consultant
 Shella Gibbs

Legal Division
 Lee Ann Rice
Staff Counsel

 Alex Pate
 Attorney II

Compliance Division
 Sharon Dorn, Senior Consultant
 Dave Smith, Senior Consultant/
 IT Manager

Dave Smith
EEO Enforcement Dept I
Investigators
 Brian Alston
 Rosemary Drake
 Melanie Goff
 Deloris Jenkins
 Nikki Owens
 Taylor Rhodes
 LaTarnya Whitmire

Sharon Dorn
EEO Enforcement Dept II
Investigators
 Andrew Blankenship
 Timmie Gibson
 Reginald Green
 Shelton Lorick
 Luis Mendoza
 Tenika Moore
 Alex Nelson
 Arlene Posey

Community Relations Dept.
 Sandra Ligon
Senior Consultant

 Anita Dantzier
 Consultant

Tracie Mefford
 Admin.
 Specialist

Mediation
 Larry McBride *
 Chief Mediator

* Temp/Fill-in Fund Source

3217

South Carolina Human Affairs Commission Organizational Chart FY 2015-2016



Board of Commissioners
 John A. Oakland, Chair
 Harold Jean Brown Ashley P. Case
 Joe Fragale Cheryl F. C. Ludlam Rev. Willie A. Thompson
 A C Williams

Intake Dept.
 Henley Ellis
Senior Consultant

Investigators
 Angela D. Adams
 Cynthia Cooke
 Cherry Dow

Admin. Specialist
 Davon Reaves

Intake Receptionist
 Lauren Mims

Betty Dennis
 Executive Assistant

Commissioner
 Raymond Buxton, II

Vicki Miller
 EEO Admin. Coordinator

Deputy Commissioner
 Dan Koon

Fair Housing Division
 Marvin Caldwell
 Div. Director

Administration Division
 Lori Dean
 Administrative Manager

Technical Services Dept.
 Stephanie Price
EEO Senior Consultant

EEO/Training Consultant
 Erin Wilson
 EEO/Training Consultant
 Shelia Gibbs

Legal Division
 Lee Ann Rice
Staff Counsel

Alex Pata
 Attorney II

Emma Bennett-Williams
 Attorney II

Compliance Division
 Sharon Dorn, Senior Consultant
 Dave Smith, Senior Consultant/
 IT Manager

Investigators
 Don Frierson
 Connie Jenkins
 Deloris Jenkins
 Luis Mendoza
 Deborah Thomas
Admin Specialist
 Tamiko Johnson

Marcus Sumter
 Fiscal Tech II

Community Relations Dept.
 Sandra Ligon
Senior Consultant

Anita Dantzler
 Consultant

Tracie Mefford
 Admin. Specialist

Dave Smith
EEO Enforcement Dept I

Investigators
 Brian Alston
 Melanie Goff
 Veronica Gonzalez
 Lauren Mims
 Nikki Owens
 Taylor Rhodes
 Abigail Sexton
 LaTarnya Whitmire

Sharon Dorn
EEO Enforcement Dept II

Investigators
 Andrew Blankenship
 Rosemary Drake
 Timmie Gibson
 Reginald Green
 Cody Lidge
 Shelton Lorick
 Alex Nelson

Mediation
 Larry McBride *
 Chief Mediator

* Temp/Fill-in Fund Source

Latest Revision March 2, 2017